

Planet

Structure Cabling Systems



WELL EXPERIENCED

More than 13 years experience
in networking industry



PROFESSIONAL TEAM

We have professional sales team
to offer fast response and engineers
to support different solutions



ABUNDANT PRODUCTS

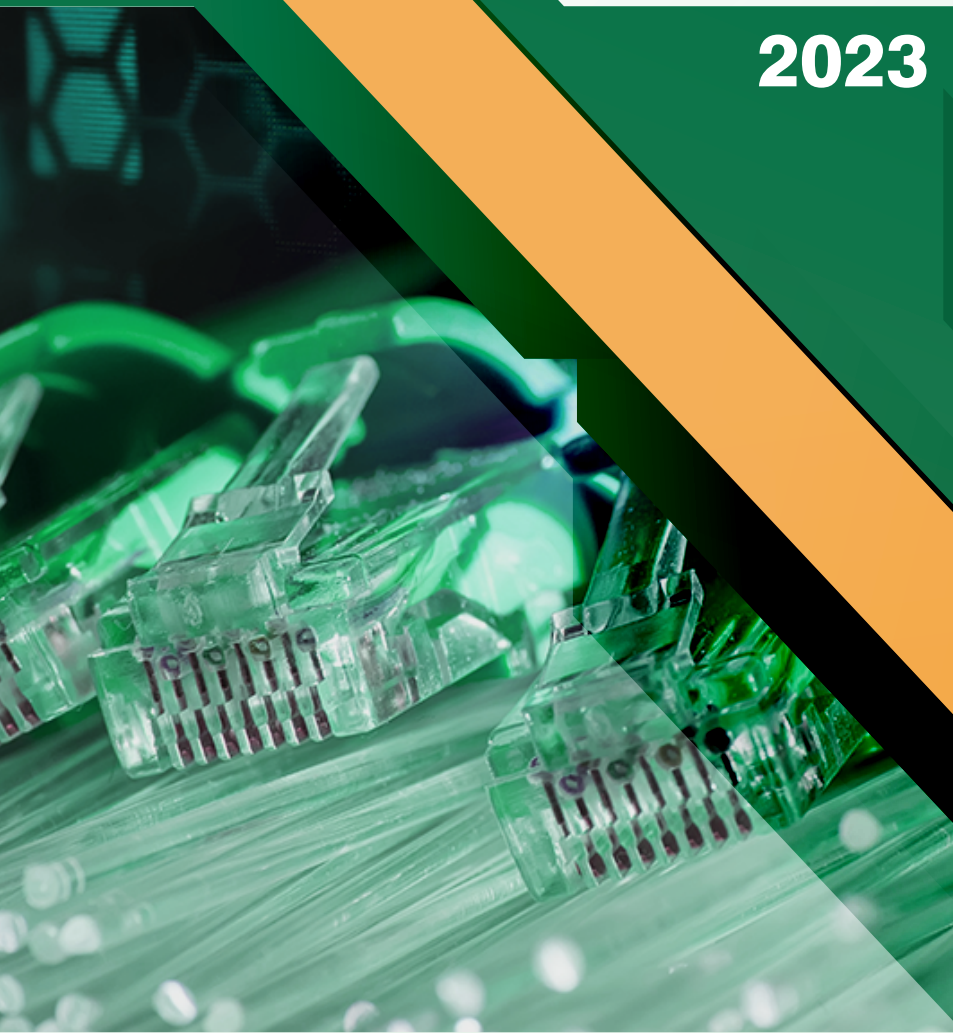
Integrated and completed
product lines
for networking and cabling items



STANDARDS COMPLIANCE

ANSI/EIA RS-310-D, IEC2-297,
DIN41494/41491,
GB/T92-3047.2 Metric & ETSI
standard

2023 - 2024



Planet structure Cabling Systems Inc. is a global provider company located in Canada, Montreal specialized for reliable networking products. We committed to provide first-class solutions for structured Copper cabling systems, fiber-optic solutions, as well as the network cabinet to a wide range of telecommunication service.

The Manufacture was launched to the market in year 2008 ensuring the latest innovation and standards compliance, reliability and product availability focusing on system performance with a 25 years product warranty.

Planet has the complete product portfolio, including patch cords, patch panels, outlets, keystones and workstation components for Category 5e, Category 6, Category 6A Category 7, Category 8, fiber optic based structured cabling systems and Data Center Solution.

Moreover, All Planet products and systems are certified with complete network solutions that are efficient, cost-effective cutting-edge and use high-tech with ISO9001, CE, RoHs and many quality Certificates.

Moreover, All Planet products and systems are certified with complete network solutions that are efficient, cost-effective cutting-edge and use high-tech with ISO9001, CE, RoHs and many quality Certificates.

Planet is expanding today to exceed the demands of tomorrow that is why we enjoyed formidable growth by having a regional office in Dubai in the United Arab Emirates to present all Planet products in MENA.



Your Professional Partner for Structured Cabling Systems

Integrated Strength of Manufacture & System Integration

Planet has over 15-year experience in developing and manufacturing of data cabling products. With our excellent knowhow about the network market, the high-speed data communication applications and the latest technology we make sure that our customer get the best support to obtain customized solutions. With this strength, also the complete product range for data communication cabling use, these keeping us in the leading edge over worldwide market. Till today our engaged and certified team has successfully completed hundreds of complex network projects all over the world.

Quality & Service

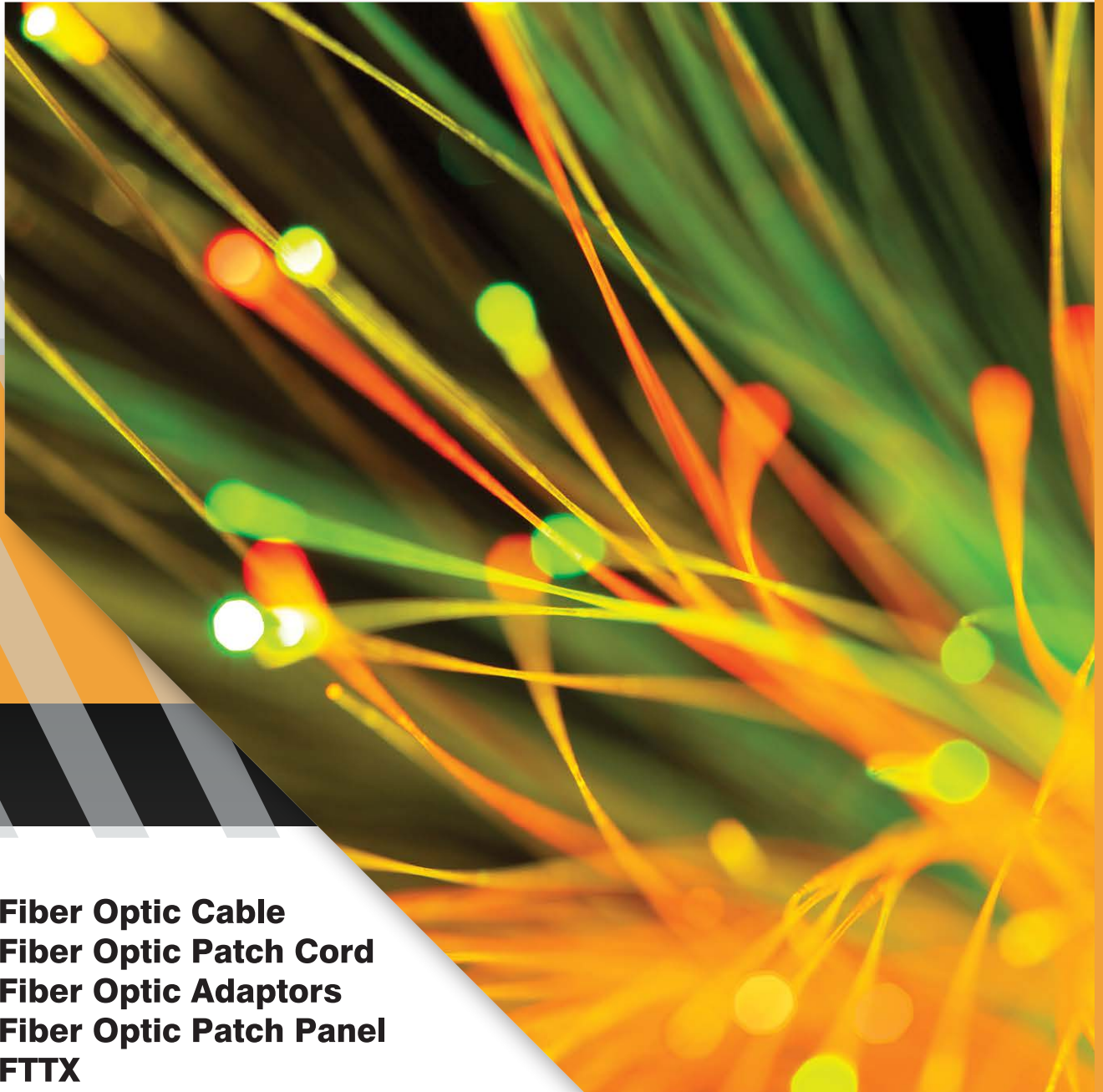
Planet has dedicated teams responsible for internal quality monitoring and systemic product upgrading, customer satisfaction, as well as technical support and service maintenance. All products are verified upon receipt of raw materials and are constantly monitored until the production process is finished. Based on the latest international standards, our team of experts and future oriented technology, we are able to build up a complete quality and service policy and that is why we can keep our promise of the best possible performance.

25 years System Warranty Policy

All copper and fibre optic cable systems supplied by Planet and installed and tested by a Planet authorized installer in accordance with the Planet Structure Cabling Systems Installation Manual, can be covered with a 25-year warranty. Planet has a complete channel program, including distributor authorization, installer trainings, warranty extension, marketing & technical service, global strategy and information exchange. This combines our strengths and helps us to achieve our global sales goals as well as the prosperity of our partners in the cabling business.



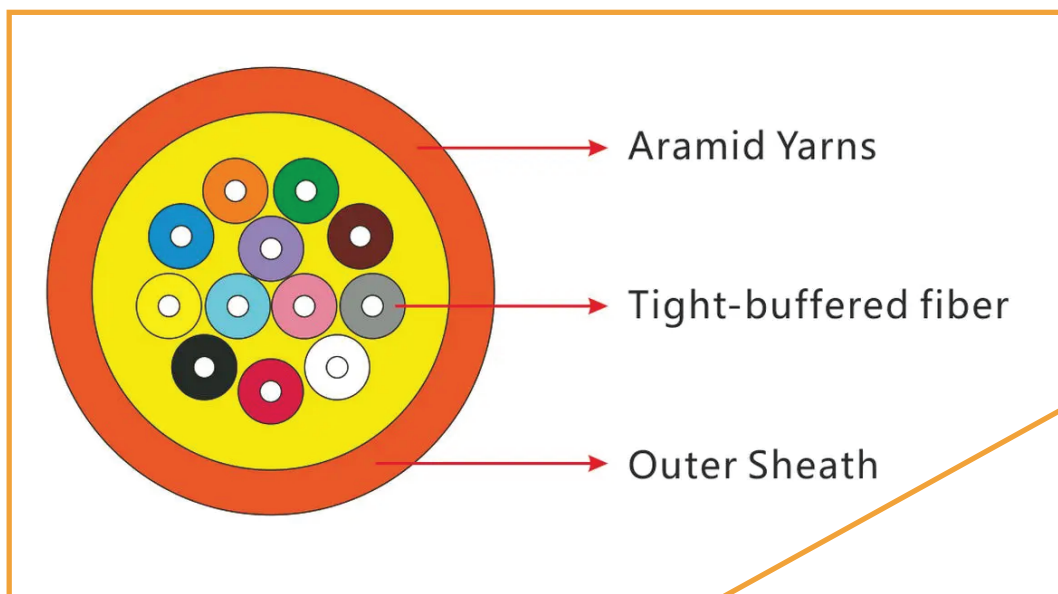
Fiber Optic System



- **Fiber Optic Cable**
- **Fiber Optic Patch Cord**
- **Fiber Optic Adaptors**
- **Fiber Optic Patch Panel**
- **FTTX**

Part Number: PL-GJFJV-xxzz

Product Structure Diagram



Product Description

GJFJV indoor fiber optic cable is made by evenly applying strands of Aramid yarns as the strength member over $\phi 900\mu\text{m}$ or $\phi 600\mu\text{m}$ tight buffer fibers and then is completed with PVC (LSZH) jacket. High strength aramid yarn strength member ensures tension-resistance and long term stable transmission for optical fibers.

Application

- Adapted to indoor distribution.
- Suitable for external applications in ducts and aerial applications.
- Long distance and local area network communication.

Part Number:

Part NO.	Description
PL-GJFJV-xxM1	xx Core Indoor Optical Fiber Cable OM1
PL-GJFJV-xxM2	xx Core Indoor Optical Fiber Cable OM2
PL-GJFJV-xxM3	xx Core Indoor Optical Fiber Cable OM3
PL-GJFJV-xxM4	xx Core Indoor Optical Fiber Cable OM4
PL-GJFJV-xxS2	xx Core Indoor Optical Fiber Cable OS2

Part Number: PL-GJFJV-xxzz

Technical Specifications

Product Parameters

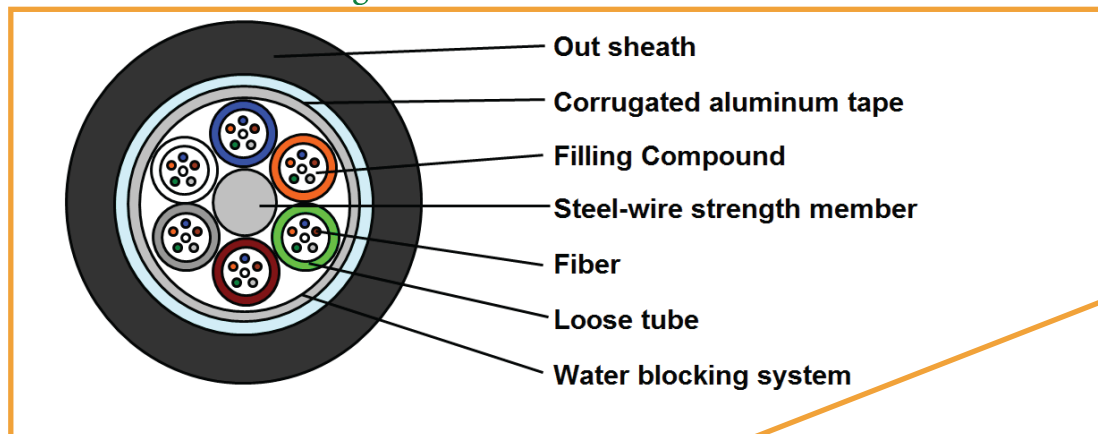
Cable Count (Core)	Out Sheath Diameter (MM)	Tight Buffer Diameter (MM)	Weight (KG)	Minimum Allowable Tensile Strength(N)		Minimum allowable Crush load (N/100mm)		Min bending Radius (MM)		Suitable Temperature (°C)
				Short -term	Long -term	Short- term	Long - term	Short -term	Long - term	
02	3.0	0.9	15.00	600	200	1000	200	20D	10D	-20 to +60
04	4.0	0.9	22.00	600	200	1000	200	20D	10D	
06	4.0	0.9	23.00	600	200	1000	200	20D	10D	
08	5.0	0.9	27.00	600	200	1000	200	20D	10D	-20 to +60
10	5.5	0.9	30.00	600	200	1000	200	20D	10D	
12	6.0	0.9	35.00	600	200	1000	200	20D	10D	
24	7.0	0.9	40.00	600	200	1000	200	20D	10D	
48	8.5	0.9	48.00	600	200	1000	200	20D	10D	

Fiber Characteristics

Parameter	Unit	9/125 SMF-OS1	62.5/125 MMF -OM1	50/125 MMF -OM2	50/125 MMF -OM3	50/125 MMF -OM4
Attenuation (See Note 1)	dB/Km	1310nm≤0.35 1550nm≤0.22	850 nm≤3.0 1300 nm≤0.8	850 nm≤3.0 1300 nm≤0.7	850 nm≤2.3 1300 nm≤0.7	850 nm≤2.3 1300 nm≤0.7
Dispersion	Ps/nm.km	1285~1330nm≤3.5 1550nm≤18.0	-	-	-	-
Fiber Diameter	um	9/125 um	62.5/125 um	50/125 um	50/125 um	50/125 um
Effective Modal Bandwidth	EMB	-	850 nm≥200	850 nm≥750	850 nm≥2000	850 nm≥4700
Zero Dispersion Wavelength	Nm	1300~1324	-	-	-	-
Zero Dispersion Slope	Ps/nm.km	≤0.095	-	-	-	-
Fiber Cutoff Wavelength	um	≤1260	-	-	-	-
Mode Field Diameter	um	@1310nm-9.2±0.4 @1550nm-10.4±0.8	-	-	-	-
Mode Field Concentricity	um	≤0.8	-	-	-	-
Cladding Diameter	um	125±1.0	125±2.0	125±1.0	125±1.0	125±1.0
Cladding Non-circularity	%	≤1.0	≤2.0	≤1.0	≤1.0	≤1.0
Coating/Cladding	um	≤12.5	≤12.5	≤12.5	≤12.5	≤12.5
Concentricity Error						
Coating Diameter	um	245±10	245±10	245±10	245±10	245±10

Part Number: PL-GYTA-xxzz

Product Structure Diagram



Product Description :

GYTA outdoor fiber optic cable, is also called multi loose tube aluminum polyethylene laminated tape external cable, is consisted of 250um fibers held in oil filled PBT loose tubes wrapped around a phosphatized steel wire central strength member. This is surrounded by either water blocking jelly, a aluminum tape laminated on both sides with polyethylene and bonded tightly to the PE sheath.

Application :

- Adapted to outdoor distribution.
- Suitable for external applications in ducts and aerial applications.
- Long distance and local area network communication.

Technical Specifications:

Product Parameters:

Cable Count (Core)	Out Sheath Diameter (MM)	Weight (KG)	Minimum Allowable Tensile Strength(N)		Minimum Allowable Crush Load (N/100mm)		Min Bending Radius(MM)		Suitable Temperature (°C)
			Short -term	Long -term	Short -term	Long -term	Short term	Long -term	
24	10.5	105.00	1500	600	1000	300	20D	10D	-40 to +60
36	10.5	105.00	1500	600	1000	300	20D	10D	
42	10.5	105.00	1500	600	1000	300	20D	10D	
48	10.5	105.00	1500	600	1000	300	20D	10D	
60	10.5	105.00	1500	600	1000	300	20D	10D	
72	10.5	105.00	1500	600	1000	300	20D	10D	
96	10.5	105.00	1500	600	1000	300	20D	10D	
144	10.5	105.00	1500	600	1000	300	20D	10D	

Part Number: PL-GYTA-xxzz

Fiber Characteristics:

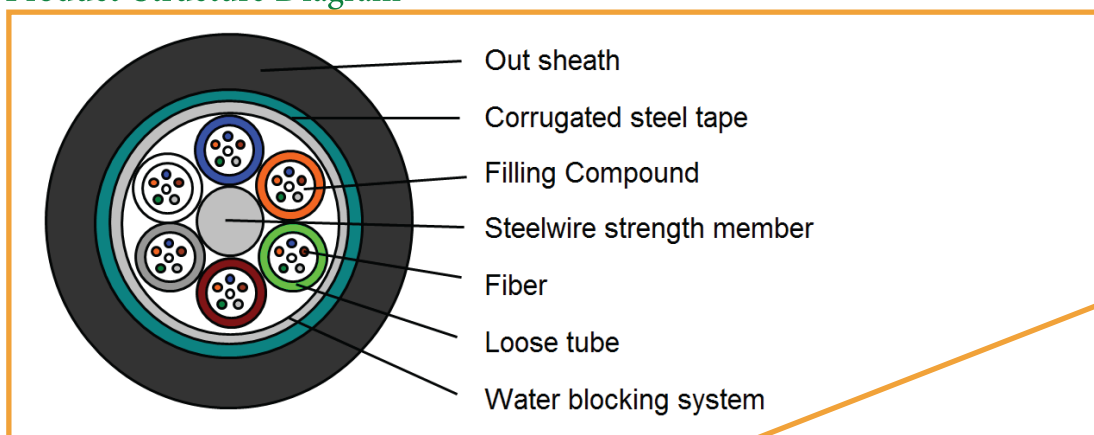
Parameter	Unit	9/125 SMF-OS2	62.5/125 MMF -OM1	50/125 MMF -OM2	50/125 MMF -OM3	50/125 MMF -OM4
Attenuation	dB/Km	1310nm≤0.35 1550nm≤0.22	850 nm≤3.0 1300 nm≤0.8	850 nm≤3.0 1300 nm≤0.7	850 nm≤2.3 1300 nm≤0.7	850 nm≤2.3 1300 nm≤0.7
Dispersion	Ps/nm.km	1285~1330nm≤3.5 1550nm≤18.0	-	-	-	-
Fiber Diameter	um	9/125 um	62.5/125 um	50/125 um	50/125 um	50/125 um
Effective Modal Bandwidth	EMB	-	850 nm≥200	850 nm≥750	850 nm≥2000	850 nm≥4700
Zero Dispersion Wavelength	Nm	1300~1324	-	-	-	-
Zero Dispersion Slope	Ps/nm.km	≤0.095	-	-	-	-
Fiber Cutoff Wavelength	um	≤1260	-	-	-	-
Mode Field Diameter	um	@1310nm-9.2±0.4 @1550nm-10.4±0.8	-	-	-	-
Mode Field Concentricity	um	≤0.8	-	-	-	-
Cladding Diameter	um	125±1.0	125±2.0	125±1.0	125±1.0	125±1.0
Cladding Non-circularity	%	≤1.0	≤2.0	≤1.0	≤1.0	≤1.0
Coating/Cladding	um	≤12.5	≤12.5	≤12.5	≤12.5	≤12.5
Concentricity Error						
Coating Diameter	um	245±10	245±10	245±10	245±10	245±10

Part Number:

Part NO.	Description
PL-GYTA-xxM1	xx Core Outdoor Optical Fiber Cable OM1
PL-GYTA-xxM2	xx Core Outdoor Optical Fiber Cable OM2
PL-GYTA-xxM3	xx Core Outdoor Optical Fiber Cable OM3
PL-GYTA-xxM4	xx Core Outdoor Optical Fiber Cable OM4
PL-GYTA-xxS2	xx Core Outdoor Optical Fiber Cable OS2

GYTS 24-144 Core Outdoor Optical Fiber Cable

Product Structure Diagram



Product Description

GYTS outdoor fiber optic cable, is also called multi loose tube steel tape external cable, is consisted of 250um fibers held in oil filled PBT loose tubes wrapped around a phosphatized steel wire central strength member. This is surrounded by either water blocking jelly, a aluminum tape laminated on both sides with polyethylene and bonded tightly to the PE sheath.

Application

- Adapted to outdoor distribution.
- Suitable for external applications in ducts and aerial applications.
- Long distance and local area network communication.

Technical Specifications

Product Parameters

Cable Count (Core)	Out Sheath Diameter (MM)	Weight (KG)	Minimum Allowable Tensile Strength(N)		Minimum Allowable Crush Load (N/100mm)		Min Bending Radius (MM)		Suitable Temperature (C)
			Short -term	Long -term	Short -term	Long -term	Short -term	Long -term	
24	10.5	105.00	1500	600	1000	300	20D	10D	-40+60
36	10.5	105.00	1500	600	1000	300	20D	10D	-40+60
42	10.5	105.00	1500	600	1000	300	20D	10D	-40+60
48	12.0	150.00	1500	600	1000	300	20D	10D	-40+60
60	12.0	150.00	1500	600	1000	300	20D	10D	-40+60
72	12.0	150.00	1500	600	1000	300	20D	10D	-40+60
96	12.5	165.00	1500	600	1000	300	20D	10D	-40+60
144	14.0	180.00	1500	600	1000	300	20D	10D	-40+60

Fiber Characteristics

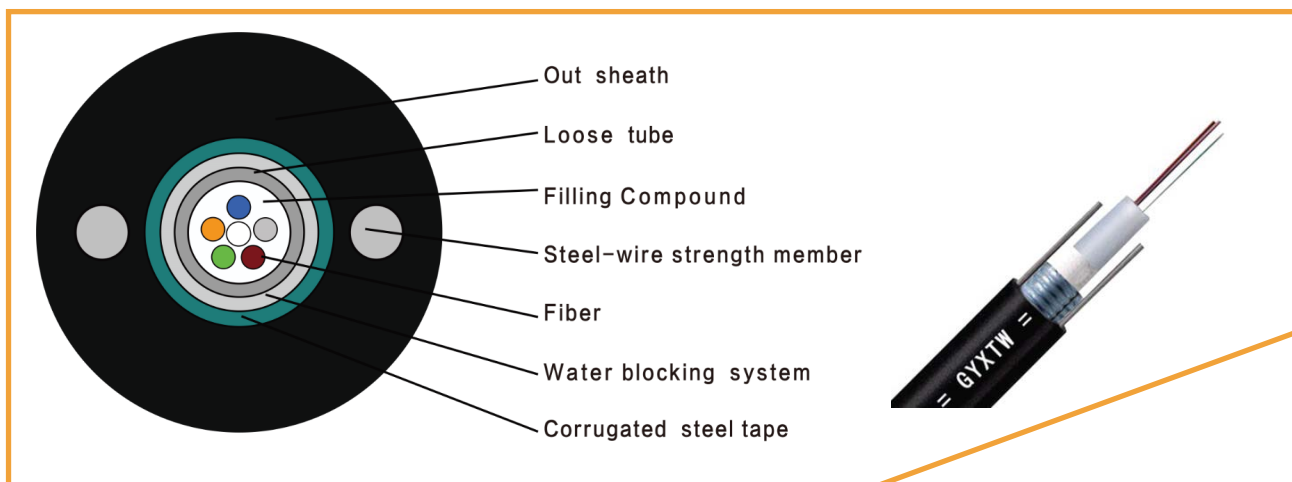
Parameter	Unit	9/125 SMF - OS2	62.5/125 MMF - OM1	50/125 MMF - OM2	50/125 MMF - OM3	50/125 MMF - OM4
Attenuation	dB/Km	1310nm≤0.35 1550nm≤0.22	850 nm≤3.0 1300 nm≤0.8	850 nm≤3.0 1300 nm≤0.7	850 nm≤2.3 1300 nm≤0.7	850 nm≤2.3 1300 nm≤0.7
Dispersion	Ps/nm.km	1285~1330nm≤3.5 1550nm≤18.0	-	-	-	-
Fiber Diameter	um	9/125 um	62.5/125 um	50/125 um	50/125 um	50/125 um
Effective Modal Bandwidth	EMB	-	850 nm≥200	850 nm≥750	850 nm≥2000	850 nm≥4700
Zero Dispersion Wavelength	Nm	1300~1324	-	-	-	-
Zero Dispersion Slope	Ps/nm.km	≤0.095	-	-	-	-
Fiber Cutoff Wavelength	um	≤1260	-	-	-	-
Mode Field Diameter	um	@1310nm-9.2±0.4 @1550nm-10.4±0.8	-	-	-	-
Mode Field Concentricity	um	≤0.8	-	-	-	-
Cladding Diameter	um	125±1.0	125±2.0	125±1.0	125±1.0	125±1.0
Cladding Non-circularity	%	≤1.0	≤2.0	≤1.0	≤1.0	≤1.0
Coating/Cladding	um	≤12.5	≤12.5	≤12.5	≤12.5	≤12.5
Concentricity Error						
Coating Diameter	um	245±10	245±10	245±10	245±10	245±10

Part Number:

Part NO.	Description
PL-GYTS-xxM1	xx Core Outdoor Optical Fiber Cable OM1
PL-GYTS-xxM2	xx Core Outdoor Optical Fiber Cable OM2
PL-GYTS-xxM3	xx Core Outdoor Optical Fiber Cable OM3
PL-GYTS-xxM4	xx Core Outdoor Optical Fiber Cable OM4
PL-GYTS-xxS2	xx Core Outdoor Optical Fiber Cable OS2

Part Number: PL-GYXTW-xxzz

Product Structure Diagram



Product Description :

GYXTW outdoor fiber optic cable, is also called single loose tube steel tape armored cable, is consisted of 250um fibers held in an gel filled central loose tube surrounded by water-blocking tape and encased in corrugated, polyethylene laminated steel tape. The cable features two parallel steel wire strength members encased in the PE outer jacket.

Application :

- Adapted to outdoor distribution.
- Suitable for external applications in ducts and aerial applications.
- Long distance and local area network communication.

Technical Specifications:

Product Parameters:

Cable Count (Core)	Out Sheath Diameter (MM)	Weight (KG)	Minimum Allowable Tensile Strength(N)		Minimum Allowable Crush Load (N/100mm)		Min Bending Radius (MM)		Suitable Temperature (°C)
			Short-term	Long-term	Short-term	Long-term	Short-term	Long-term	
2	8.3	78.00	1500	600	1000	300	20D	10D	-40 to +60
4	8.3	78.00	1500	600	1000	300	20D	10D	
6	8.3	78.00	1500	600	1000	300	20D	10D	
8	8.3	78.00	1500	600	1000	300	20D	10D	
12	8.3	78.00	1500	600	1000	300	20D	10D	
24	8.3	78.00	1500	600	1000	300	20D	10D	
36	8.3	78.00	1500	600	1000	300	20D	10D	

Part Number: PL-GYXTW-xxzz

Fiber Characteristics:

Parameter	Unit	9/125 SMF-OS2	62.5/125 MMF -OM1	50/125 MMF -OM2	50/125 MMF -OM3	50/125 MMF -OM4
Attenuation	dB/Km	1310nm≤0.35 1550nm≤0.22	850 nm≤3.0 1300 nm≤0.8	850 nm≤3.0 1300 nm≤0.7	850 nm≤2.3 1300 nm≤0.7	850 nm≤2.3 1300 nm≤0.7
Dispersion	Ps/nm.km	1285~1330nm≤3.5 1550nm≤18.0	-	-	-	-
Fiber Diameter	um	9/125 um	62.5/125 um	50/125 um	50/125 um	50/125 um
Effective Modal Bandwidth	EMB	-	850 nm≥200	850 nm≥750	850 nm≥2000	850 nm≥4700
Zero Dispersion Wavelength	Nm	1300~1324	-	-	-	-
Zero Dispersion Slope	Ps/nm.km	≤0.095	-	-	-	-
Fiber Cutoff Wavelength	um	≤1260	-	-	-	-
Mode Field Diameter	um	@1310nm-9.2±0.4 @1550nm-10.4±0.8	-	-	-	-
Mode Field Concentricity	um	≤0.8	-	-	-	-
Cladding Diameter	um	125±1.0	125±2.0	125±1.0	125±1.0	125±1.0
Cladding Non-circularity	%	≤1.0	≤2.0	≤1.0	≤1.0	≤1.0
Coating/Cladding	um	≤12.5	≤12.5	≤12.5	≤12.5	≤12.5
Concentricity Error						
Coating Diameter	um	245±10	245±10	245±10	245±10	245±10

Part Number:

Part NO.	Description
PL-GYXTW-xxM1	xx Core Outdoor Optical Fiber Cable OM1
PL-GYXTW-xxM2	xx Core Outdoor Optical Fiber Cable OM2
PL-GYXTW-xxM3	xx Core Outdoor Optical Fiber Cable OM3
PL-GYXTW-xxM4	xx Core Outdoor Optical Fiber Cable OM4
PL-GYXTW-xxS2	xx Core Outdoor Optical Fiber Cable OS2

Part Number: PL-FADxxzz

FEATURES:

Fiber Optic Adapter :

- meets with TIA/EIA 568-B.3 standard
- panel clip for easy installation
- Snap-in designed shutter
- RoHS compliant

APPLICATIONS:

- Telecommunication & CATV
- LAN (including FITL, FTTH and FTTD) and Data network

Specifications:

Parameter	Single-mode	Multi-mode
Insertion Loss	≤0.2dB	
Exchangeability	0.2dB max. increase	
Repeatability (500 mating)	0.2dB max. increase	
Sleeve Material	Ceramic	Phosphor bronze
Housing Material	Plastic	
Operating Temperature	-20℃ to +85 ℃	
Storage Temperature	-40℃ to +85 ℃	

Part Number:

LC Adapter

Part Number	Description
PL-FADLCUSD	LC/UPC Single Mode Duplex Adapter
PL-FADLCUSQ	LC/UPC Single Mode Quad Adapter
PL-FADLCASD	LC/ APC Single Mode Duplex Adapter
PL-FADLCASQ	LC/ APC Single Mode Quad Adapter
PL-FADLCU0MD	LC/UPC Multi Mode Duplex Adapter
PL-FADLCU0MQ	LC/UPC Multi Mode Quad Adapter
PL-FADLCU3MD	LC/UPC Multi Mode OM3 Duplex Adapter
PL-FADLCU3MQ	LC/UPC Multi Mode OM3 Quad Adapter
PL-FADLCU4MD	LC/UPC Multi Mode OM4 Duplex Adapter
PL-FADLCU4MQ	LC/UPC Multi Mode OM4 Quad Adapter

SC Adapter

Part Number	Description
PL-FADSCUSS	SC/UPC Single Mode Simplex Adapter
PL-FADSCUSD	SC/UPC Single Mode Duplex Adapter
PL-FADSCASS	SC/ APC Single Mode Simplex Adapter
PL-FADSCASD	SC/ APC Single Mode Duplex Adapter
PL-FADSCU0MS	SC/UPC Multi Mode Simplex Adapter
PL-FADSCU0MD	SC/UPC Multi Mode Duplex Adapter
PL-FADSCU3MS	SC/UPC Multi Mode OM3 Simplex Adapter
PL-FADSCU3MD	SC/UPC Multi Mode OM3 Duplex Adapter
PL-FADSCU4MS	SC/UPC Multi Mode OM4 Simplex Adapter
PL-FADSCU4MD	SC/UPC Multi Mode OM4 Duplex Adapter



Part Number: PL-FC**C

FEATURES:

Fiber Optic Connector :

- meets with TIA/EIA 568-B.3 standard
- panel clip for easy installation
- Snap-in designed shutter
- RoHS compliant

APPLICATIONS:

- Telecommunication & CATV
- LAN (including FITL, FTTH and FTTD) and Data network

Specifications:

Fiber Polishing Method	UPC Polish, APC Polish
Applicable fiber Diameter	Ø 250-900µm, 1.6×2.0, 2.0×3.0, Ø3.0mm(SM, MM50, MM62.5, MM10G)
Insertion Loss	≤0.25 dB
Return Loss	>45dB (SM fiber SPC polish)>50dB (SM fiber APC polish / When use with Flat cleaver) >65dB (SM fiber APC polish / When use with Angled cleaver) >65dB (SM fiber APC polish I When use with Angled cleaver)
Operational Temperature	-40 – +85°
Pull test	<0.2dB, 4N load(0.125 fiber)< 0.2dB, 40N load (2x3mm, Ø 3.0mm)
Impact test	< 0.2dB, 1.5m, 10 repetitions
Durability test	< 0.2dB, 200 repetition of connecting/disconnecting
Vibrate test	< 0.2dB, 3 axes 2hr/axis, 1.5mm(peak-peak), 10 to 55Hz(45Hzlmin)
Thermal Cycle test	< 0.2dB, -40 to 75 °C, 21 cycles for 168 hours(3.0mm cable)
Humidity test	< 0.2dB, 90 to 95%RH, Temp75°C for 168hrs



Part Number: PL-FC**C

Part Number:

LC Series	
PL-FCLCUSM	LC/UPC Single-mode Simplex Connector
PL-FCLCASM	LC/APC Single-mode Simplex Connector
PL-FCLCUMM	LC/UPC Multi-mode Simplex Connector
PL-FCLCUM3	LC/UPC Multi-mode OM3 Simplex Connector
PL-FCLCUM4	LC/UPC Multi-mode OM4 Simplex Connector

SC Series	
PL-FCSCUSM	SC/UPC Single-mode Simplex Connector
PL-FCSCASM	SC/APC Single-mode Simplex Connector
PL-FCSCUMM	SC/UPC Multi-mode Simplex Connector
PL-FCSCUM3	SC/UPC Multi-mode OM3 Simplex Connector
PL-FCSCUM4	SC/UPC Multi-mode OM4 Simplex Connector



Part Number:: PL-PCyyzzxx

FEATURES:ATURES:

LC Fiber Optic Patch Cord :

- Low insertion loss and high return loss.
- Easy to handle.
- Stable environment.
- High performance and cost effective.

APPLICATIONS::

- Telecommunications
- LAN
- FTTH
- Optic fiber sensors
- Testing instruments



Specifications:

Parameter	Single-mode UPC/PC	Single-mode APC	Multi-mode
Insertion Loss	≤0.2dB	≤0.3dB	≤0.2dB
Return Loss	≥50dB	≥60dB	≥30dB
Wavelength	1310nm, 1550nm		850nm, 1310nm
Interchangeability	≤0.2dB		
Vibration	≤0.2dB		
Operating Temperature	-40℃ to +75℃		
Storage Temperature	-45℃ to +85℃		

Order Information

Fiber Type	Single-mode (SM) or Multi-mode (MM)
Cable Diameter	Ø 2.0mm or Ø 3.0mm
Cable Length	1m, 1.5m, 3m, 5m, 10m, 20m, 50m or others
Connector Type	SC/UPC-SC/UPC, SC/APC-SC/APC, SC/UPC-SC/APC, SC-LC, SC-ST, SC-FC etc.
Fiber Core	Simplex (SP or SX) or Duplex (DP or DX)
Polishing	UPC (or PC) or APC
Color	Blue (SM UPC) / Green (SM APC) / Grey (MM UPC) / Aqua (OM3 UPC) / Magenta (OM4 UPC)

Part Number:: PL-PCyyzzxx

Part Number	Description
LC/LC UPC Duplex Single Mode	
PL-PCLLDSUxx	LC/LC UPC Duplex Single Mode , OS2
LC/LC UPC Simplex Single Mode	
PL-PCLLSSUxx	LC/LC UPC Simplex Single Mode, OS2
LC/LC APC Duplex Single Mode	
PL-PCLLDSAxx	LC/LC APC Duplex Single Mode , OS2
LC/LC APC Simplex Single Mode	
PL-PCLLSSAxx	LC/LC APC Simplex Single Mode, OS2
LC/LC UPC Duplex Multi Mode OM2	
PL-PCLLDMUxx	LC/LC UPC Duplex Multi Mode,OM2
LC/LC UPC Simplex Multi Mode OM2	
PL-PCLLSMUxx	LC/LC UPC Simplex Multi Mode,OM2
LC/LC UPC Duplex Multi Mode OM3	
PL-PCLLDM3Uxx	LC/LC UPC Duplex Multi Mode,OM3
LC/LC UPC Simplex Multi Mode OM3	
PL-PCLLSM3Uxx	LC/LC UPC Simplex Multi Mode,OM3
LC/LC UPC Duplex Multi Mode OM4	
PL-PCLLDM4Uxx	LC/LC UPC Duplex Multi Mode,OM4
LC/LC UPC Simplex Multi Mode OM4	
PL-PCLLSM4Uxx	LC/LC UPC Simplex Multi Mode,OM4

Part Number	Description
SC/LC UPC Duplex Single Mode	
PL-PCSLDSUxx	SC/LC UPC Duplex Single Mode , OS2
SC/LC UPC Simplex Single Mode	
PL-PCSLSSUxx	SC/LC UPC Simplex Single Mode, OS2
SC/LC APC Duplex Single Mode	
PL-PCSLDSAxx	SC/LC APC Duplex Single Mode , OS2
SC/LC APC Simplex Single Mode	
PL-PCSLSSAxx	SC/LC APC Simplex Single Mode, OS2
SC/LC UPC Duplex Multi Mode OM2	
PL-PCSLDMUxx	SC/LC UPC Duplex Multi Mode,OM2
SC/LC UPC Simplex Multi Mode OM2	
PL-PCSLSMUxx	SC/LC UPC Simplex Multi Mode,OM2
SC/LC UPC Duplex Multi Mode OM3	
PL-PCSLDM3Uxx	SC/LC UPC Duplex Multi Mode,OM3
SC/LC UPC Simplex Multi Mode OM3	
PL-PCSLSM3Uxx	SC/LC UPC Simplex Multi Mode,OM3
SC/LC UPC Duplex Multi Mode OM4	
PL-PCSLDM4Uxx	SC/LC UPC Duplex Multi Mode,OM4
SC/LC UPC Simplex Multi Mode OM4	
PL-PCSLSM4Uxx	SC/LC UPC Simplex Multi Mode,OM4

xx= Length

Part Number:: PL-PCyyzzxx

FEATURES:ATURES:

SC Fiber Optic Patch Cord :

- Low insertion loss and high return loss.
- Easy to handle.
- Stable environment.
- High performance and cost effective.

APPLICATIONS::

- Telecommunications
- LAN
- FTTH
- Optic fiber sensors
- Testing instruments



Specifications:

Parameter	Single-mode UPC/PC	Single-mode APC	Multi-mode
Insertion Loss	≤0.2dB	≤0.3dB	≤0.2dB
Return Loss	≥50dB	≥60dB	≥30dB
Wavelength	1310nm, 1550nm		850nm, 1310nm
Interchangeability	≤0.2dB		
Vibration	≤0.2dB		
Operating Temperature	-40°C to +75°C		
Storage Temperature	-45°C to +85°C		

Order Information

Fiber Type	Single-mode (SM) or Multi-mode (MM)
Cable Diameter	Ø 2.0mm or Ø 3.0mm
Cable Length	1m, 1.5m, 3m, 5m, 10m, 20m, 50m or others
Connector Type	SC/UPC-SC/UPC, SC/APC-SC/APC, SC/UPC-SC/APC, SC-LC, SC-ST, SC-FC etc.
Fiber Core	Simplex (SP or SX) or Duplex (DP or DX)
Polishing	UPC (or PC) or APC
Color	Blue (SM UPC) / Green (SM APC) / Grey (MM UPC) / Aqua (OM3 UPC) / Magenta (OM4 UPC)

Part Number:: PL-PCyyzzxx

Part Number	Description
SC/SC UPC Duplex Single Mode	
PL-PC22DSUxx	SC/SC UPC Duplex Single Mode , OS2
SC/SC UPC Simplex Single Mode	
PL-PC22SSUxx	SC/SC UPC Simplex Single Mode, OS2
SC/SC APC Duplex Single Mode	
PL-PC22DSAxx	SC/SC APC Duplex Single Mode , OS2
SC/SC APC Simplex Single Mode	
PL-PC22SSAxx	SC/SC APC Simplex Single Mode, OS2
SC/SC UPC Duplex Multi Mode OM2	
PL-PC22DMUxx	SC/SC UPC Duplex Multi Mode,OM2
SC/SC UPC Simplex Multi Mode OM2	
PL-PC22SMUxx	SC/SC UPC Simplex Multi Mode,OM2
SC/SC UPC Duplex Multi Mode OM3	
PL-PC22DM3Uxx	SC/SC UPC Duplex Multi Mode,OM3
SC/SC UPC Simplex Multi Mode OM3	
PL-PC22SM3Uxx	SC/SC UPC Simplex Multi Mode,OM3
SC/SC UPC Duplex Multi Mode OM4	
PL-PC22DM4Uxx	SC/SC UPC Duplex Multi Mode,OM4
SC/SC UPC Simplex Multi Mode OM4	
PL-PC22SM4Uxx	SC/SC UPC Simplex Multi Mode,OM4

Part Number	Description
SC/LC UPC Duplex Single Mode	
PL-PCSLDSUxx	SC/LC UPC Duplex Single Mode , OS2
SC/LC UPC Simplex Single Mode	
PL-PCSLSSUxx	SC/LC UPC Simplex Single Mode, OS2
SC/LC APC Duplex Single Mode	
PL-PCSLDSAxx	SC/LC APC Duplex Single Mode , OS2
SC/LC APC Simplex Single Mode	
PL-PCSLSSAxx	SC/LC APC Simplex Single Mode, OS2
SC/LC UPC Duplex Multi Mode OM2	
PL-PCSLDMUxx	SC/LC UPC Duplex Multi Mode,OM2
SC/LC UPC Simplex Multi Mode OM2	
PL-PCSLSMUxx	SC/LC UPC Simplex Multi Mode,OM2
SC/LC UPC Duplex Multi Mode OM3	
PL-PCSLDM3Uxx	SC/LC UPC Duplex Multi Mode,OM3
SC/LC UPC Simplex Multi Mode OM3	
PL-PCSLSM3Uxx	SC/LC UPC Simplex Multi Mode,OM3
SC/LC UPC Duplex Multi Mode OM4	
PL-PCSLDM4Uxx	SC/LC UPC Duplex Multi Mode,OM4
SC/LC UPC Simplex Multi Mode OM4	
PL-PCSLSM4Uxx	SC/LC UPC Simplex Multi Mode,OM4

xx= Length

Part Number:: PL-PTyyzzxx

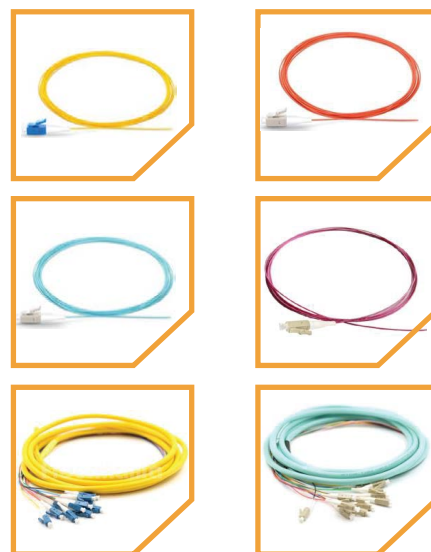
FEATURES:ATURES:

LC Fiber Optic Pigtail :

- Compliant to IEC, TIA/EIA, NTT and JIS standard.
- Enhanced strain relief, zip cord and round cable.
- All cables are riser-rated (OFNR).
- Environmental stable.

APPLICATIONS::

- Telecommunications
- LAN
- FTTH
- Optic fiber sensors
- Testing instruments



Specifications:

Parameter	Single-mode UPC/PC	Single-mode APC	Multi-mode
Insertion Loss	$\leq 0.2\text{dB}$	$\leq 0.3\text{dB}$	$\leq 0.2\text{dB}$
Return Loss	$\geq 35\text{dB}$	$\geq 60\text{dB}$	$\geq 30\text{dB}$
Durability	≥ 1000 times		
Cable Diameter	0.9mm		
Fiber Type	G652D		
Interchangeability	$\leq 0.2\text{dB}$		
Vibration	$\leq 0.2\text{dB}$		
Operating Temperature	-40°C to $+75^{\circ}\text{C}$		
Storage Temperature	-45°C to $+85^{\circ}\text{C}$		

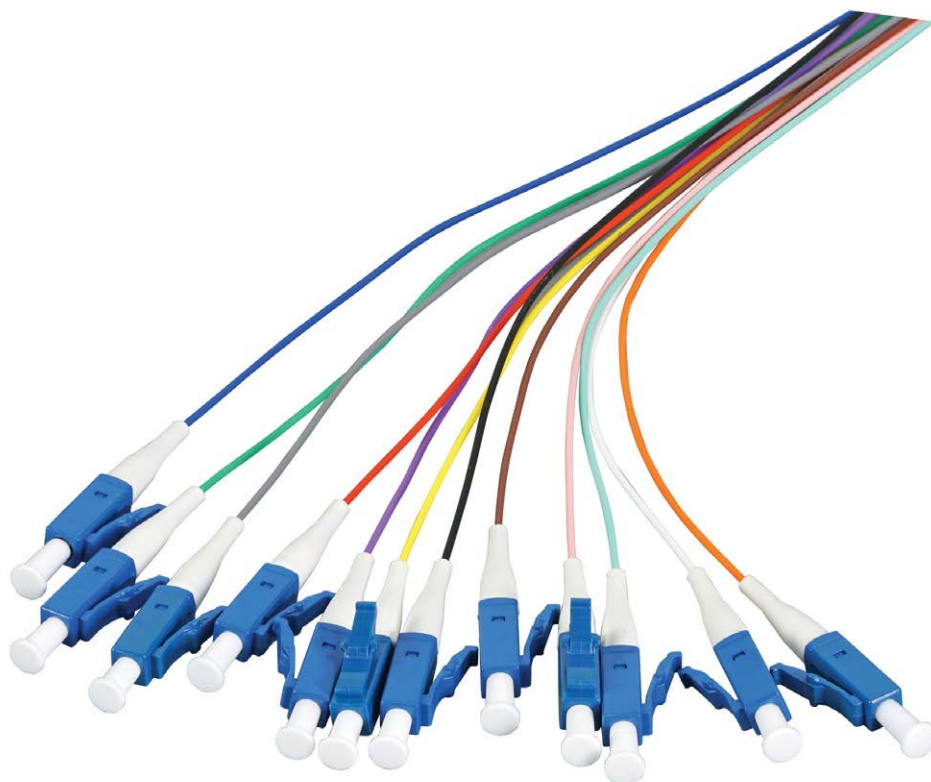
Order Information

Fiber Type	Single-mode (SM) or Multi-mode (MM)
Cable Length	1.5m or others
Polishing	UPC (or PC) or APC
Color	Blue (SM UPC) / Green (SM APC) / Grey (MM UPC) / Aqua (OM3 UPC) / Magenta (OM4 UPC)

Part Number:: PL-PTyyzzxx

Part Number:

Part Number	Description
PL-PS2LCU15	LC/UPC Single Mode 0.9mm Pigtail, 1.5 meter
PL-PS2LC12B15	LC/UPC Single Mode 12 Fibers Bundle Pigtail
PL-PS2LCA15	LC/ APC Single Mode 0.9mm Pigtail, 1.5 meter
PL-PS2LC12BA15	LC/ APC Single Mode 12 Fibers Bundle Pigtail
PL-PM2LCU15	LC/UPC Multi Mode OM2 0.9mm Pigtail, 1.5 meter
PL-PM2LC12B15	LC/UPC Multi Mode OM2 12 Fibers Bundle Pigtail
PL-PM3LCU15	LC/UPC Multi Mode OM3 0.9mm Pigtail, 1.5 meter
PL-PM3LC12B15	LC/UPC Multi Mode OM3 12 Fibers Bundle Pigtail
PL-PM4LCU15	LC/UPC Multi Mode OM4 0.9mm Pigtail, 1.5 meter
PL-PM4LC12B15	LC/UPC Multi Mode OM4 12 Fibers Bundle Pigtail



Part Number:: PL-PTyyzzxx

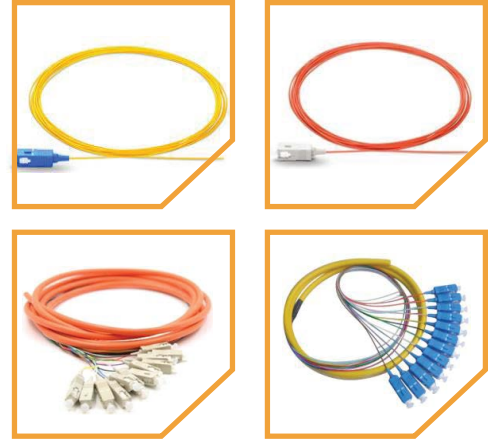
FEATURES:ATURES:

SC Fiber Optic Pigtail :

- Compliant to IEC, TIA/EIA, NTT and JIS standard.
- Enhanced strain relief, zip cord and round cable.
- All cables are riser-rated (OFNR).
- Environmental stable.

APPLICATIONS::

- Telecommunications
- LAN
- FTTH
- Optic fiber sensors
- Testing instruments



Specifications:

Parameter	Single-mode UPC/PC	Single-mode APC	Multi-mode
Insertion Loss	≤0.2dB	≤0.3dB	≤0.2dB
Return Loss	≥35dB	≥60dB	≥30dB
Durability	≥1000 times		
Cable Diameter	0.9mm		
Fiber Type	G652D		
Interchangeability	≤0.2dB		
Vibration	≤0.2dB		
Operating Temperature	-40 C to +75 C		
Storage Temperature	-45 C to +85 C		

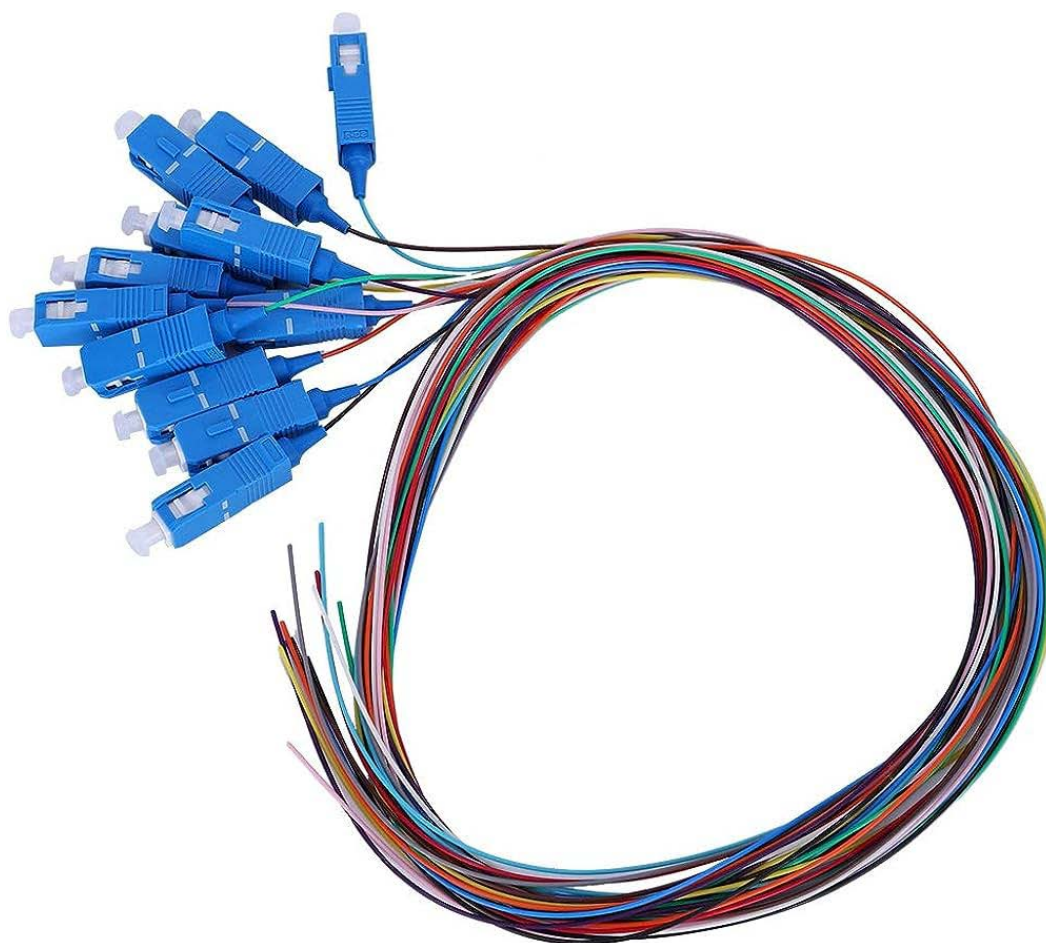
Order Information

Fiber Type	Single-mode (SM) or Multi-mode (MM)
Cable Length	1.5m or others
Polishing	UPC (or PC) or APC
Color	Blue (SM UPC) / Green (SM APC) / Grey (MM UPC) / Aqua (OM3 UPC) / Magenta (OM4 UPC)

Part Number:: PL-PTyyzzxx

Part Number:

Part Number	Description
PL-PS2SCU15	SC/UPC Single Mode 0.9mm Pigtail, 1.5 meter
PL-PS2SC12B15	SC/UPC Single Mode 12 Fibers Bundle Pigtail
PL-PS2SCA15	SC/ APC Single Mode 0.9mm Pigtail, 1.5 meter
PL-PS2SC12BA15	SC/ APC Single Mode 12 Fibers Bundle Pigtail
PL-PM2SCU15	SC/UPC Multi Mode OM2 0.9mm Pigtail, 1.5 meter
PL-PM2SC12B15	SC/UPC Multi Mode OM2 12 Fibers Bundle Pigtail
PL-PM3SCU15	SC/UPC Multi Mode OM3 0.9mm Pigtail, 1.5 meter
PL-PM3SC12B15	SC/UPC Multi Mode OM3 12 Fibers Bundle Pigtail
PL-PM4SCU15	SC/UPC Multi Mode OM4 0.9mm Pigtail, 1.5 meter
PL-PM4SC12B15	SC/UPC Multi Mode OM4 12 Fibers Bundle Pigtail



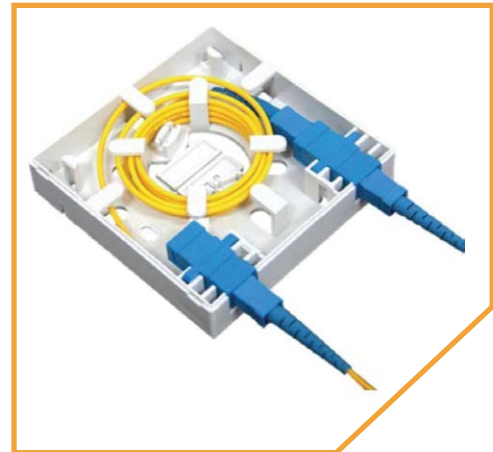
Part Number: PL-FOWB1

FEATURES:

- Multi cable entry points
- Integrated heat shrink splice holder
- Holds up to 2 single fibers
- Multiple cable entries top and bottom
- Integrated fiber management
- Integrated shutter protects against laser exposure and dust

APPLICATIONS:

- Telecommunications
- LAN
- FTTH
- Optic fiber sensors
- Testing instruments



Technical Specifications

Item	Technical Parameters
Maximum Single Fiber Count	2
Maximum Number of heat splice	2
Number of shuttered outlets	2
Number of cable entre points	1
Height	86 mm
Width	86 mm
Depth	25 mm
Colour	White
Material	ABS
RoHS Compliant	Yes

Part Number: PL-FOPPSL24



Product Description:

-LC, Duplex / SC, Simplex Patch Panel, Sliding Type, 24 Port

-Fiber-Mart 19" ODF rack mount can be installed on standard 19" racks and currently being widely used in optical fiber distribution frames.

Features:

- Good uniformity and low insertion loss
- Low polarization dependent loss
- Excellent Environmental Stability
- Excellent Mechanical
- Suability Telcordia GR-1221 and GR-1209

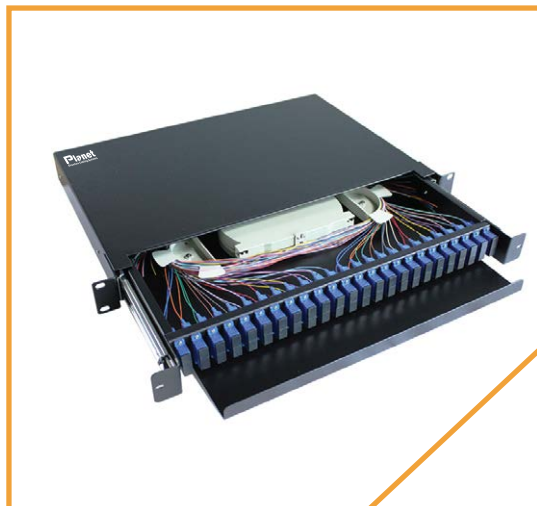
Applications:

- Fiber to The Point(FTTX)
- Fiber to The Home (FTTH)
- Passive Optical Networks (PON)
- Local Area Networks (LAN)
- Cable Television(CATV)
- Test Equipment

Technical Specifications:

Environment temperature	-25°Cæ~+45°Cæ
Relative humidity	≤word 85% (30'Cæ).
Atmosphere pressure	70-106KPa
Insulated Resistance	≥32x 10MΩ/500V (DC)
Intensity	≤15KV(DC)/1 minnow spark-over and no flying arc
Fiber bending radium guaranteed more than 40mm	≥40mm.

Part Number: PL-FOPPSS24



Product Description:

-LC, Quad / SC, Duplex Patch Panel, Sliding Type, 24 Port

-Fiber-Mart 19" ODF rack mount can be installed on standard 19" racks and currently being widely used in optical fiber distribution frames.

Features:

- Good uniformity and low insertion loss
- Low polarization dependent loss
- Excellent Environmental Stability
- Excellent Mechanical
- Suability Telcordia GR-1221 and GR -1209

Applications:

- Fiber to The Point (FTTX)
- Fiber to The Home (FTTH)
- Passive Optical Networks (PON)
- Local Area Networks (LAN)
- Cable Television (CATV)
- Test Equipment

Technical Specifications:

Environment temperature	-25°Cæ~+45°Cæ
Relative humidity	≤word 85% (30'Cæ).
Atmosphere pressure	70-106KPa
Insulated Resistance	≥32x 10MQ/500V (DC)
Intensity	≤15KV(DC)/1 minnow spark-over and no flying arc
Fiber bending radium guaranteed more than 40mm	≥40mm.

Part Number: PL-FOPWMP24



Product Description:

- Available for small capacity communication system, wall mounting, reasonable and compact structure, harmonized with machine room.
- The cabinet is composed of two parts, one links with optical cables for fusion connection between optical cable and fiber pigtail and another links with patch cord.

Applications:

- Fiber to The Point (FTTX)
- Fiber to The Home (FTTH)
- Passive Optical Networks (PON)
- Local Area Networks (LAN)
- Cable Television (CATV)
- Test Equipment

Features:

- Provide fusion and storage appliance for optical cables.
- Reliable protection appliance of fixing, stripping and earthing for optical cables.
- Whole range protected design for fiber lay to ensure the bending radius $\geq 40\text{mm}$
- Provide various accessories to avoid any unexpected damage to the fiber

Technical Specifications:

Environment temperature	-25°Cæ~+45°Cæ
Relative humidity	≤word 85% (30°Cæ).
Atmosphere pressure	70-106KPa
Insulated Resistance	≥32x 10MΩ/500V (DC)
Intensity	≤15KV(DC)/1 minnow spark-over and no flying arc
Fiber bending radium guaranteed more than 40mm	≥40mm.

Part Number: PL-FOPWMP48



Product Description:

- Available for small capacity communication system, wall mounting, reasonable and compact structure, harmonized with machine room.
- The cabinet is composed of two parts, one links with optical cables for fusion connection between optical cable and fiber pigtail and another links with patch cord.

Applications:

- Fiber to The Point (FTTX)
- Fiber to The Home (FTTH)
- Passive Optical Networks (PON)
- Local Area Networks (LAN)
- Cable Television (CATV)
- Test Equipment

Features:

- Provide fusion and storage appliance for optical cables.
- Reliable protection appliance of fixing, stripping and earthing for optical cables.
- Whole range protected design for fiber lay to ensure the bending radius $\geq 40\text{mm}$
- Provide various accessories to avoid any unexpected damage to the fiber

Technical Specifications:

Environment temperature	-25°Cæ~+45°Cæ
Relative humidity	≤word 85% (30'Cæ).
Atmosphere pressure	70-106KPa
Insulated Resistance	≥32x 10MΩ/500V (DC)
Intensity	≤15KV(DC)/1 minnow spark-over and no flying arc
Fiber bending radium guaranteed more than 40mm	≥40mm.

Part Number PL-FOPWMM24 / PL-FOPWMM48



Product Description:

- Available for small capacity communication system, wall mounting, reasonable and compact structure, harmonized with machine room.
- The cabinet is composed of two parts, one links with optical cables for fusion connection between optical cable and fiber pigtail and another links with patch cord.

Applications:

- Fiber to The Point (FTTX)
- Fiber to The Home (FTTH)
- Passive Optical Networks (PON)
- Local Area Networks (LAN)
- Cable Television (CATV)
- Test Equipment

Features:

- Provide fusion and storage appliance for optical cables.
- Reliable protection appliance of fixing, stripping and earthing for optical cables.
- Whole range protected design for fiber lay to ensure the bending radius $\geq 40\text{mm}$
- Provide various accessories to avoid any unexpected damage to the fiber

Technical Specifications:

Environment temperature	-25°Cæ~+45°Cæ
Relative humidity	≤word 85% (30'Cæ).
Atmosphere pressure	70-106KPa
Insulated Resistance	≥32x 10MΩ/500V (DC)
Intensity	≤15KV(DC)/1 minnow spark-over and no flying arc
Fiber bending radium guaranteed more than 40mm	≥40mm.

Part Number: PL-FODEV x x

Number Of Core = XX



Product Description:

- Dome enclosure is suitable for protecting fiber cable splices in branching applications. Its well-engineered, injection-molded outer body makes it impenetrable to the elements. It can protect splices and ensure reliability with usage in ambient temperatures from -40°C to +65 °C. It can be placed in aerial, wall mounted, or duct mounted locations.

Features:

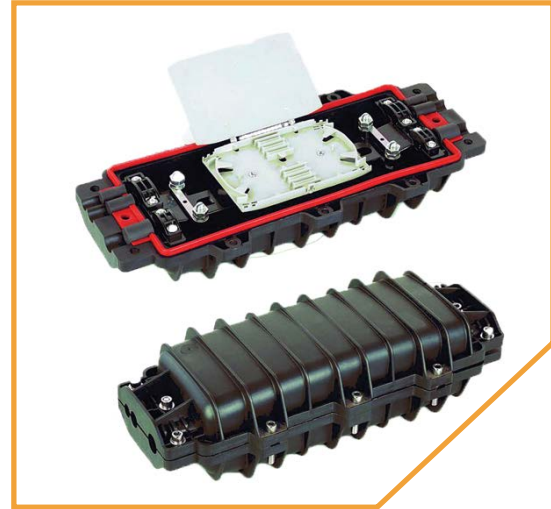
- Integrated seal, airtight and waterproof design
- RoHS compliant
- Overlap structure in splicing tray for easy installation.
- Fiber-bending radius guaranteed more than 40mm.
- Easy to install and re-entry with a common can wrench.
- Excellent Mechanical Sealed to protect fiber and splice ensuring durability.

Technical Specifications

Cable Port	7 Entries
Number of fiber fusion	48/96/144/192/240/288 core
Splice tray cores	12 (bunchy)
Number of splice trays	8
Working temperature	-40°C~65°C
Insulation resistance	>2×104MΩ
Sealing Type	Heat-shrinkable Type
Installation Type	Pole-Mount
Cable Diameter	Φ8~Φ18
Sealing structure	Silicon gum material
Dimension	Φ500×250

Part Number: PL-FOHEVxx

Number Of Core = XX



Product Description :

- It can be Used for splicing and protecting optical fibers in straight-through or branching applications
- High strengthened sealant, fixed bolts and cable fixed hoop ensures waterproof, long-term reliability and usage

Features:

- Heat shrinkable sealing structure.
- High quality industrial plastic body material.
- Suitable for cable diameter 8mm-22mm.
- Support aerial under-ground pipeline man holes hand holes.
- Protection level reaches IP68.

Technical Specifications

Cable Port	2 In 2out
Capacity	48/96/144/192/240/288 core
Material	PC
Dimension (cm)	46.5*18*12.2
Cable Diameter	8-22MM
Weight/pc	2.5kg
Sealing Way	Silica Gel
The Application Of Temperature	-40℃~65℃



 **Planet Structure Cabling Systems Inc.**

 **Montreal, CANADA**

 **info@planet-ca.com**

 **+1 438 990 0820**



www.planet-ca.com