

Part Number: PVC: PL-CA6STP LSZH: PL-CA6STL

FEATURES:

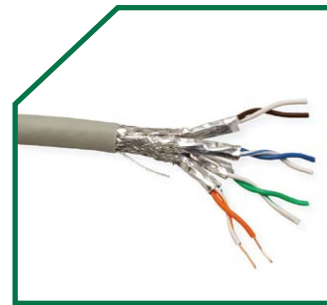
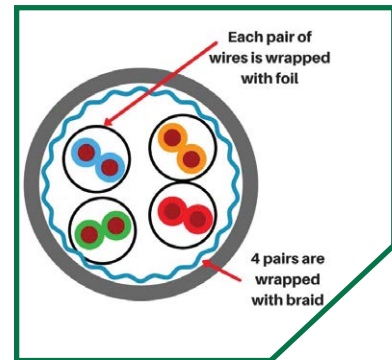
comply with all category 6 requirements as:

- ISO/IEC 11801 ED.2.2:2011
- ANSI/TIA 568-C.2:2011
- CENELEC EN 50173-1:2011
- CENELEC EN 50288-6-1:2013
- IEC61156-5:2012(Edition 2.0)
- Characterized and tested to 350MHz

APPLICATIONS:

- 1000BASE-TX
- 1000BASE-T
- 100BASE-TX Fast Ethernet
- 10BASE-T Ethernet
- Voice

DRAWING:



CONFIGURATION:

| | | | |
|--------------|--------------|-----------------------|------|
| Conductor | Material | Bare Copper | |
| | Construction | 23 AWG 0.565mm ± 0.02 | |
| Insulation | Material | HDPE | |
| | Diameter | 1.00 ± 0.1 mm | |
| Cross Member | Material | PE | |
| Sheath | Material | PVC | LSZH |
| | Thickness | 0.5mm nominal | |
| | Diameter | 7.2 ± 0.3 mm | |

Technical Performance (100M)

| Frequency MHz | Attenuation Max dB/100m | NEXT Min. dB/100m | PSNEXT Min. dB/100m | ELFEXT Min. db/100m | RL Min. dB | PHASE VELOCITY MIN(M/S) | PHASE DELAY MAX(ns/100m) |
|---------------|-------------------------|-------------------|---------------------|---------------------|------------|-------------------------|--------------------------|
| 1 | 1.9 | 74 | 72 | 68 | 20 | 0.585c | 570 |
| 4 | 3.7 | 65 | 63 | 56 | 23 | --- | 552 |
| 10 | 5.9 | 59 | 57 | 48 | 25 | 0.611c | 545 |
| 16 | 7.5 | 56 | 54 | 44 | 25 | --- | 543 |
| 20 | 8.4 | 55 | 53 | 42 | 25 | --- | 542 |
| 31.25 | 10.6 | 52 | 50 | 38 | 23.6 | --- | 540 |
| 62.5 | 15.4 | 47 | 45 | 32 | 21.5 | --- | 539 |
| 100 | 19.8 | 44 | 42 | 28 | 20.1 | 0.620c | 538 |
| 200 | 29 | 40 | 38 | 22 | 18 | | 537 |
| 250 | 32.8 | 38 | 36 | 20 | 17.3 | 0.622c | 536 |