

Planet

Structure Cabling Systems



WELL EXPERIENCED

More than 13 years experience in networking industry



PROFESSIONAL TEAM

We have professional sales team to offer fast response and engineers to support different solutions



ABUNDANT PRODUCTS

Integrated and completed product lines for networking and cabling items

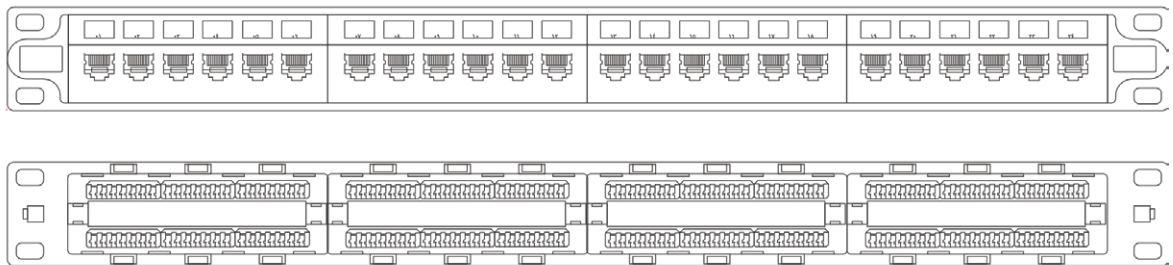


STANDARDS COMPLIANCE

ANSI/EIA RS-310-D, IEC2-297, DIN43494/43491, GB/T92-3047.2 Metric & ETSI standard



Part Number: PL-PP24UL



FEATURES:

Planet Patch Panel 24 Port punch down RJ45 Cat6 unshielded in 1U height

Comply with ANSI/TIA-568.2-D, ISO/IEC 11801-1 and

EN 50173-1 Class E specifications..

The clear numbering on both the front and back of each panel gives you a quick and easy way to identify cable runs.

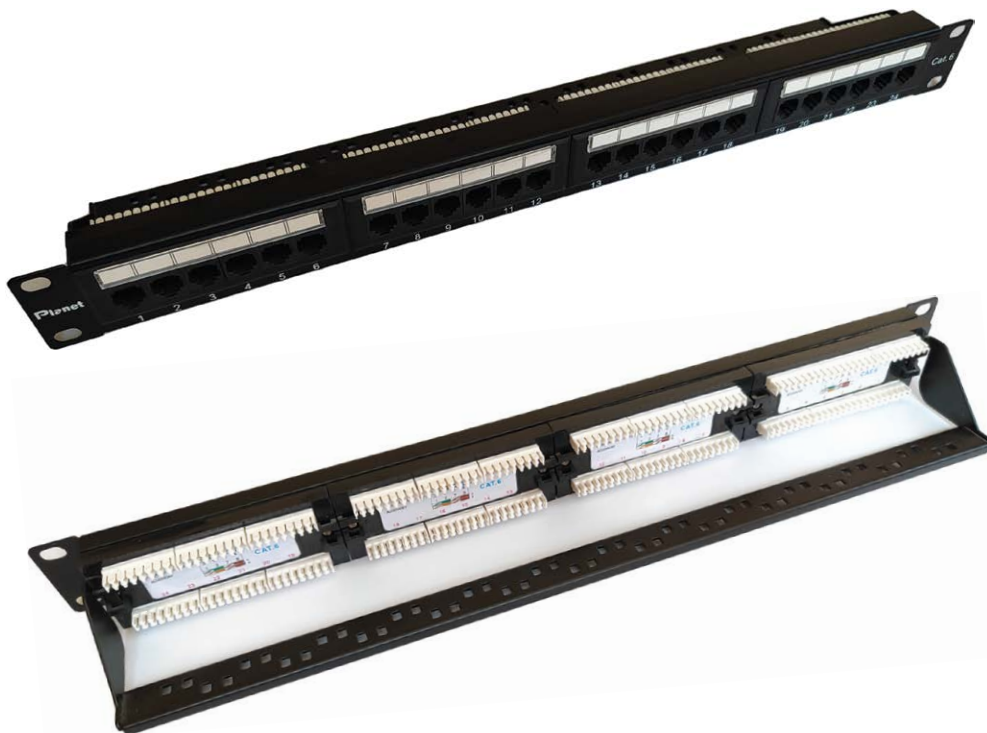
Applications:

- 1000BASE-TX Gigabit Ethernet
- 1000BASE-T Gigabit Ethernet
- 100BASE-TX Fast Ethernet
- 10BASE-T Ethernet
- Voice, Video and other applications

Part Number: PL-PP24UL

Technical Specifications:

Panel	1.5mm SPCC with Black color painting
RJ45 Housing	PBT
RJ45 Contact Material & Finished	Phosphor Bronze With 50-60" Nickel plated
	Contact area: Min. 3mm 3" Gold plated
IDC House	PC
IDC Terminal Material & Finished	Phosphor Bronze with 50" Tin-Lead plated. over 50-60" Nickel plated.
	100 & krone tool compatible
	Use for 23-24AWG stranded and solid wire
Jack Bracket Set	ABS Black color
Property	The IDC color combines two wirings of T568A & T568B.
Insertion Force	900 grams for 8 contacts.
Retention Temperature	-30° C to 70° C
Jack Durability	Jack: 750 cycles Plug- Jack mating and unmating test, Insertion cycles at 20 cycles/minute max. Contact resistance test per 100 cycles.
IDC Durability	Max, 200 pinching times.
Standards Compliant	The Cat.6 performance is in compliance with the ANSI/ TIA/ EIA 568 B. 2 Standard Jack



Part Number: PL-PP48UL



FEATURES:

Planet Patch Panel 48 Port punch down RJ45 Cat6 unshielded in

Comply with ANSI/TIA-568.2-D, ISO/IEC 11801-1 and

EN 50173-1 Class E specifications..

The clear numbering on both the front and back of each panel gives you a quick and easy way to identify cable runs.

Applications:

- 1000BASE-TX Gigabit Ethernet
- 1000BASE-T Gigabit Ethernet
- 100BASE-TX Fast Ethernet
- 10BASE-T Ethernet
- Voice, Video and other applications

Part Number: PL-PP48UL

Technical Specifications:

Panel	1.5mm SPCC with Black color painting
RJ45 Housing	PBT
RJ45 Contact Material & Finished	Phosphor Bronze With 50-60" Nickel plated
	Contact area: Min. 3mm 3" Gold plated
IDC House	PC
IDC Terminal Material & Finished	Phosphor Bronze with 50" Tin-Lead plated. over 50-60" Nickel plead.
	100 & krone tool compatible
	Use for 23-24AWG stranded and solid wire
Jack Bracket Set	ABS Black color
Property	The IDC color combines two wirings of T568A & T568B.
Insertion Force	900 grams for 8 contacts.
Retention Temperature	-30° C to 70° C
Jack Durability	Jack: 750 cycles Plug- Jack mating and unmating test, Insertion cycles at 20 cycles/minute max. Contact resistance test per 100 cycles.
IDC Durability	Max, 200 pinching times.
Standards Compliant	The Cat.6 performance is in compliance with the ANSI/ TIA/ EIA 568 B. 2 Standard Jack



Part Number: PL-PP24UU



FEATURES:

24-port Blank Patch Panel, Unshielded Jack Style

- Designed for Planet keystone (P/N: PL-KE6UPD + PL-KE6UTL)
- Include removable cable management
- 24 ports in 1U height
- RoHS compliant



Part Number: PL-PP48UU



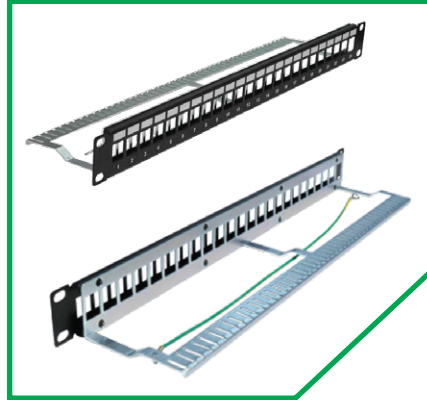
FEATURES:

48-port Blank Patch Panel, Unshielded Jack Style

- Designed for Planet keystone (P/N: PL-KE6UPD + PL-KE6UTL)
- Include removable cable management
- 48 ports in 1U height
- RoHS compliant



Part Number: PL-PP24SU



FEATURES:

- port Blank Patch Panel, shielded Jack Style 24
- Designed for Planet keystone:
- (P/N: PL-KE6UPD + PL-KE6UTL + PL-KE6AUTL + PL-KE6STL+ PL-KE6ASTL + PL-KE7STL)
- Include removable cable management and grounding wire
- 24 ports in 1U height
- RoHS compliant



Part Number: PL-PA24SU



FEATURES:

24-port angled Blank Patch Panel, shielded Jack Style

- Designed for Planet keystone:
- (P/N: PL-KE6UPD + PL-KE6UTL + PL-KE6AUTL + PL-KE6STL+ PL-KE6ASTL + PL-KE7STL)
- Include removable cable management and grounding wire
- 24 ports in 1U height
- RoHS compliant



 **Planet Structure Cabling Systems Inc.**

 **Montreal, CANADA**

 **info@planet-ca.com**

 **+1 438 990 0820**



www.planet-ca.com