

Planet

Structure Cabling Systems



WELL EXPERIENCED

More than 13 years experience
in networking industry



PROFESSIONAL TEAM

We have professional sales team
to offer fast response and engineers
to support different solutions



ABUNDANT PRODUCTS

Integrated and completed
product lines
for networking and cabling items



STANDARDS COMPLIANCE

ANSI/EIA RS-310-D, IEC2-297,
DIN4394/43491,
GB/T92-3047.2 Metric & ETSI
standard



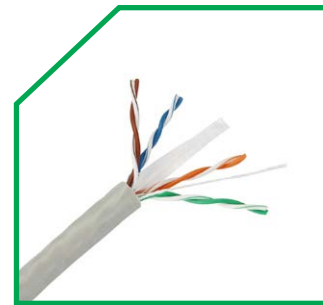
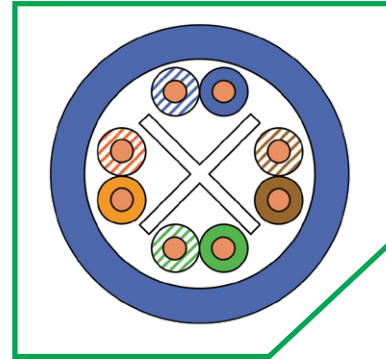
Part Number: PVC: PL-CA6UTP LSZH: PL-CA6UTL

FEATURES:

comply with all category 6 requirements as:

- ISO/IEC 11801 ED.2.2:2011
- ANSI/TIA 568-C.2:2011
- CENELEC EN 50173-1:2011
- CENELEC EN 50288-6-1:2013
- IEC61156-5:2012(Edition 2.0)
- Characterized and tested to 350MHz

DRAWING:



APPLICATIONS:

- 1000BASE-TX
- 1000BASE-T
- 100BASE-TX Fast Ethernet
- 10BASE-T Ethernet
- Voice

CONFIGURATION:

Conductor	Material	Bare Copper	
	Construction	23 AWG 0.565 mm ± 0.02	
Insulation	Material	HDPE	
	Diameter	1.00 ± 0.1 mm	
Cross Member	Material	PE	
Sheath	Material	PVC	LSZH
	Thickness	0.5mm nominal	
	Diameter	6.2 ± 0.3 mm	

Technical Performance (100M)

Frequency MHz	Attenuation Max dB/100m	NEXT Min. dB/100m	PSNEXT Min. dB/100m	ELFEXT Min. db/100m	RL Min. dB	PHASE VELOCITY MIN(M/S)	PHASE DELAY MAX(ns/100m)
1	1.9	74	72	68	20	0.585c	570
4	3.7	65	63	56	23	---	552
10	5.9	59	57	48	25	0.611c	545
16	7.5	56	54	44	25	---	543
20	8.4	55	53	42	25	---	542
31.25	10.6	52	50	38	23.6	---	540
62.5	15.4	47	45	32	21.5	---	539
100	19.8	44	42	28	20.1	0.620c	538
200	29	40	38	22	18	---	537
250	32.8	38	36	20	17.3	0.622c	536

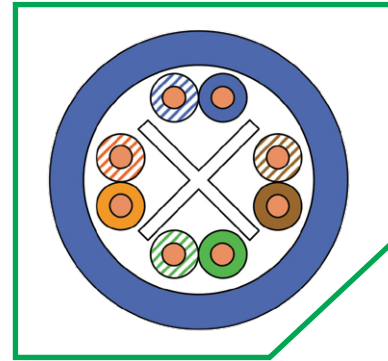
Part Number: PCV: PL-CA6AUTP / **LSZH:** PL-CA6AUTL

FEATURES:

comply with all category 6A requirements as:

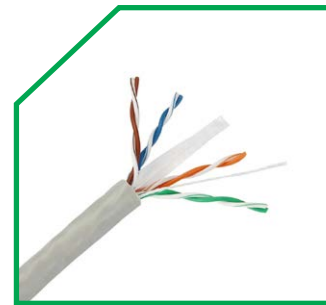
- ISO/IEC 11801 ED.2.2:2011
- ANSI/TIA 568-C.2:2011
- CENELEC EN 50173-1:2011
- CENELEC EN 50288-6-1:2013
- IEC61156-5:2012(Edition 2.0)
- Characterized and tested to 350MHz

DRAWING:



APPLICATIONS:

- 10GBASE-T Ethernet
- 1000BASE-TX
- 1000BASE-T
- 100BASE-TX Fast Ethernet
- 10BASE-T Ethernet
- Voice



CONFIGURATION:

Conductor	Material	Bare Copper	
	Construction	23 AWG 0.565 mm ± 0.02	
Insulation	Material	HDPE	
	Diameter	1.00 ± 0.1 mm	
Cross Member	Material	PE	
Sheath	Material	PVC	LSZH
	Thickness	0.5mm nominal	
	Diameter	7.5 ± 0.3 mm	

Technical Performance (100M)

Frequency	ATT(20°C)	RL	NEXT	PSNEXT	ACR-F	PS ACR-F	PS ANEXT	PS AACR-F
(MHz)	≤dB	≥dB	≥dB	≥dB	≥dB	≥dB	≥dB	≥dB
1	2.1	20	74.3	72.3	67.8	64.8	67	67
4	3.8	23	65.3	63.3	55.8	52.8	67	66.2
10	5.9	25	59.3	57.3	47.8	44.8	67	58.2
16	7.5	25	56.2	54.2	43.7	40.7	67	54.1
20	8.4	25	54.8	52.8	41.8	38.8	67	52.2
31.25	10.5	23.6	51.9	49.9	37.9	34.9	67	48.3
62.5	15	21.5	47.7	45.4	31.9	28.9	65.6	42.3
100	19.1	20.1	44.3	42.3	27.8	24.8	62.5	38.2
200	27.6	18	39.8	37.8	21.8	18.8	58	32.2
250	31.1	17.3	38.3	36.3	19.8	16.8	56.5	30.2
300	34.3	16.8	37.1	35.1	18.3	15.3	55.3	28.7
500	45.3	15.2	33.8	31.8	13.8	10.8	52	24.2
550	51.2	14.5	35.1	29.5	10.8	9.6	48	20.2

Part Number: PVC: PL-CA6FTP LSZH: PL-CA6FTL

FEATURES:

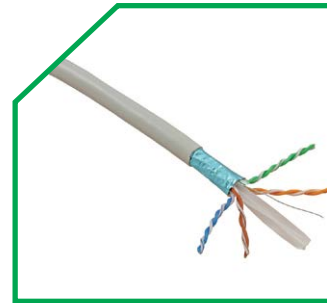
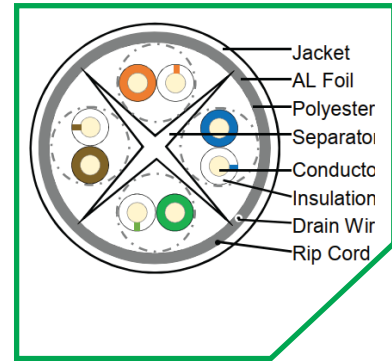
comply with all category 6 requirements as:

- ISO/IEC 11801 ED.2.2:2011
- ANSI/TIA 568-C.2:2011
- CENELEC EN 50173-1:2011
- CENELEC EN 50288-6-1:2013
- IEC61156-5:2012(Edition 2.0)
- Characterized and tested to 350MHz

APPLICATIONS:

- 1000BASE-TX
- 1000BASE-T
- 100BASE-TX Fast Ethernet
- 10BASE-T Ethernet
- Voice

DRAWING:



CONFIGURATION:

Conductor	Material	Bare Copper	
	Construction	23 AWG 0.565 mm ± 0.02	
Insulation	Material	HDPE	
	Diameter	1.00 ± 0.1 mm	
Cross Member	Material	PE	
Sheath	Material	PVC	LSZH
	Thickness	0.5mm nominal	
	Diameter	6.7 ± 0.3 mm	

Technical Performance (100M)

Frequency MHz	Attenuation Max dB/100m	NEXT Min. dB/100m	PSNEXT Min. dB/100m	ELFEXT Min. db/100m	RL Min. dB	PHASE VELOCITY MIN(M/S)	PHASE DELAY MAX(ns/100m)
1	1.9	74	72	68	20	0.585c	570
4	3.7	65	63	56	23	---	552
10	5.9	59	57	48	25	0.611c	545
16	7.5	56	54	44	25	---	543
20	8.4	55	53	42	25	---	542
31.25	10.6	52	50	38	23.6	---	540
62.5	15.4	47	45	32	21.5	---	539
100	19.8	44	42	28	20.1	0.620c	538
200	29	40	38	22	18		537
250	32.8	38	36	20	17.3	0.622c	536

Part Number: PVC: PL-CA6AFTP LSZH: PL-CA6AFTL

FEATURES:

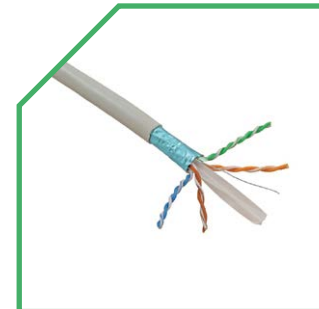
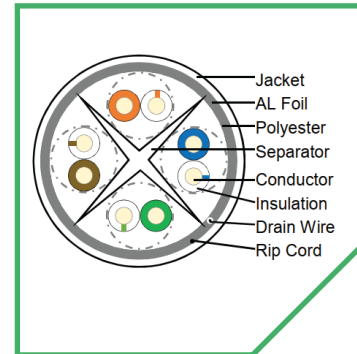
comply with all category 6A requirements as:

- ISO/IEC 11801 ED.2.2:2011
- ANSI/TIA 568-C.2:2011
- CENELEC EN 50173-1:2011
- CENELEC EN 50288-6-1:2013
- IEC61156-5:2012(Edition 2.0)
- Characterized and tested to 350MHz

APPLICATIONS:

- 10GBASE-T Ethernet
- 1000BASE-TX
- 1000BASE-T
- 100BASE-TX Fast Ethernet
- 10BASE-T Ethernet
- Voice

DRAWING:



CONFIGURATION:

Conductor	Material	Bare Copper	
	Construction	23 AWG 0.565 mm ± 0.02	
Insulation	Material	HDPE	
	Diameter	1.00 ± 0.1 mm	
Cross Member	Material	PE	
Sheath	Material	PVC	LSZH
	Thickness	0.5mm nominal	
	Diameter	6.9 ± 0.3 mm	

Technical Performance (100M)

Frequency (MHz)	ATT(20°C) ≤dB	RL ≥dB	NEXT ≥dB	PSNEXT ≥dB	ACR-F ≥dB	PS ACR-F ≥dB	PS ANEXT ≥dB	PS AACR-F ≥dB
1	2.1	20	74.3	72.3	67.8	64.8	67	67
4	3.8	23	65.3	63.3	55.8	52.8	67	66.2
10	5.9	25	59.3	57.3	47.8	44.8	67	58.2
16	7.5	25	56.2	54.2	43.7	40.7	67	54.1
20	8.4	25	54.8	52.8	41.8	38.8	67	52.2
31.25	10.5	23.6	51.9	49.9	37.9	34.9	67	48.3
62.5	15	21.5	47.7	45.4	31.9	28.9	65.6	42.3
100	19.1	20.1	44.3	42.3	27.8	24.8	62.5	38.2
200	27.6	18	39.8	37.8	21.8	18.8	58	32.2
250	31.1	17.3	38.3	36.3	19.8	16.8	56.5	30.2
300	34.3	16.8	37.1	35.1	18.3	15.3	55.3	28.7
500	45.3	15.2	33.8	31.8	13.8	10.8	52	24.2
550	51.2	14.5	35.1	29.5	10.8	9.6	48	20.2

Part Number: PVC: PL-CA6STP LSZH: PL-CA6STL

FEATURES:

comply with all category 6 requirements as:

- ISO/IEC 11801 ED.2.2:2011
- ANSI/TIA 568-C.2:2011
- CENELEC EN 50173-1:2011
- CENELEC EN 50288-6-1:2013
- IEC61156-5:2012(Edition 2.0)
- Characterized and tested to 350MHz

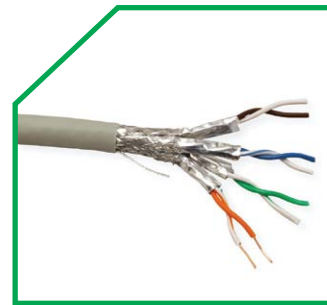
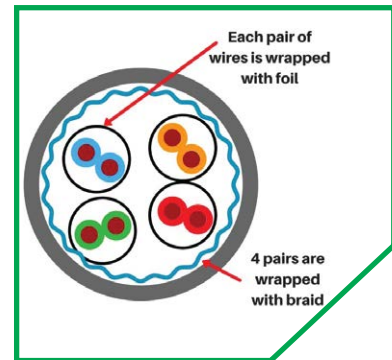
APPLICATIONS:

- 1000BASE-TX
- 1000BASE-T
- 100BASE-TX Fast Ethernet
- 10BASE-T Ethernet
- Voice

CONFIGURATION:

Conductor	Material	Bare Copper	
	Construction	23 AWG 0.565mm ± 0.02	
Insulation	Material	HDPE	
	Diameter	1.00 ± 0.1 mm	
Cross Member	Material	PE	
Sheath	Material	PVC	LSZH
	Thickness	0.5mm nominal	
	Diameter	7.2 ± 0.3 mm	

DRAWING:



Technical Performance (100M)

Frequency MHz	Attenuation Max dB/100m	NEXT Min. dB/100m	PSNEXT Min. dB/100m	ELFEXT Min. db/100m	RL Min. dB	PHASE VELOCITY MIN(M/S)	PHASE DELAY MAX(ns/100m)
1	1.9	74	72	68	20	0.585c	570
4	3.7	65	63	56	23	---	552
10	5.9	59	57	48	25	0.611c	545
16	7.5	56	54	44	25	---	543
20	8.4	55	53	42	25	---	542
31.25	10.6	52	50	38	23.6	---	540
62.5	15.4	47	45	32	21.5	---	539
100	19.8	44	42	28	20.1	0.620c	538
200	29	40	38	22	18		537
250	32.8	38	36	20	17.3	0.622c	536

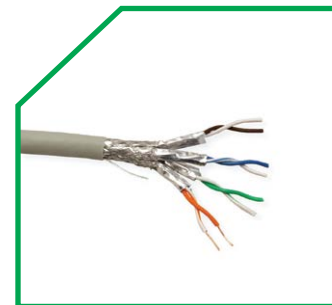
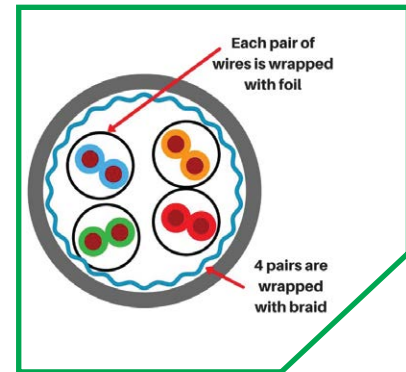
Part Number: PVC: PL-CA6ASTP / **LSZH:** PL-CA6ASTL

FEATURES:

comply with all category 6A requirements as:

- ISO/IEC 11801 ED.2.2:2011
- ANSI/TIA 568-C.2:2011
- CENELEC EN 50173-1:2011
- CENELEC EN 50288-6-1:2013
- IEC61156-5:2012(Edition 2.0)
- Characterized and tested to 350MHz

DRAWING:



APPLICATIONS:

- 10GBASE-T Ethernet
- 1000BASE-TX
- 1000BASE-T
- 100BASE-TX Fast Ethernet
- 10BASE-T Ethernet
- Voice

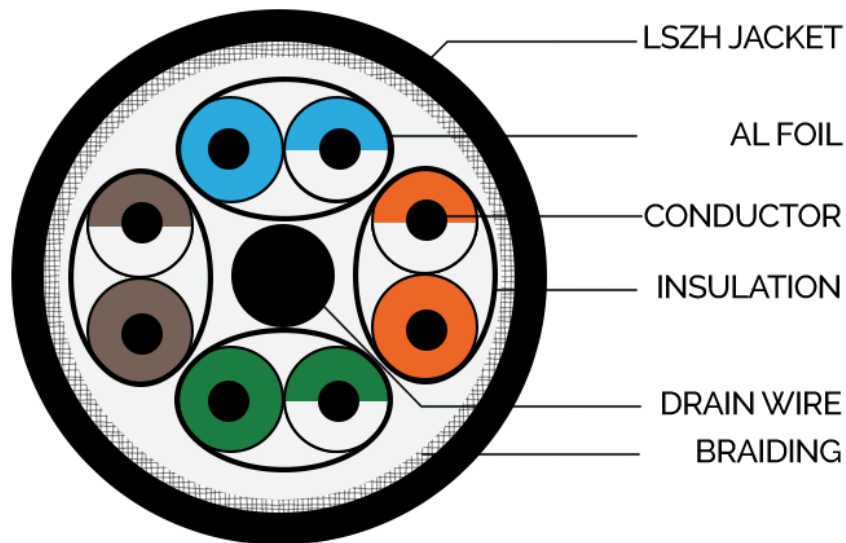
CONFIGURATION:

Category	SFTP CAT6A			Jacket Physical Properties	Before Aging Tensile Strength(Mpa)≥13.5
Test Standard	ISO/IEC 11801,TIA/EIA 568C.2				Elongation(%)≥150
Conductor	Material	Solid Bare Copper			Aging Period(°C*hrs) 100°C*24h*7d
	Nom.O.D.	0.57±0.003mm			After Aging Tensile Strength(MPa) ≥12.5
Insulation	Material	Skin-foam-Skin PE		Elongation(%) ≥125	
	Nom.O.D.	1.42±0.05mm		Coldbend(-20±2°C*4h) No visible cracks	
Shield	Al Foil+Braiding			Electrical Characteristics (20°C)	Impedance(Ω) 100±15
Jacket	Thickness	0.65±0.05mm			Delay Shew(ns/100m) ≤45
	External O.D.	7.6±0.3mm			NVP 69%
	Material	PVC or PE or LSZH			Capacitance(nf/100m) ≤5.6
	Color	According to Requires			DC Resistance(Ω/100m) ≤9.5
Rip-cord	Yes	Drain Wire	0.40TC	DC Resistance Unbalance(%) ≤2.0	

Part Number: PVC: PL-CA6ASTP / LSZH: PL-CA6ASTL

Technical Performance (100M)

Frequency (MHZ)	(ohm)	RL(dB)	ATTN (dB/100m)	NEXT (dB)	PSNEXT (dB/100m)	ELFEXT (dB/100m)	SELFEXT (dB/100m)	Transmit Speed
0.772		19.4	1.8	76	74	70	67	
1		20.0	2.0	74.3	72.3	61.8	64.8	
4		23.0	3.8	65.3	63.3	55.8	52.8	
8		24.5	5.3	60.8	58.8	49.7	46.7	
10		25.0	6	59.3	57.3	47.8	44.8	
16		25.0	7.6	56.2	54.2	43.7	40.7	
20	100±10Ω	25.0	8.5	54.8	52.8	41.8	38.8	0.65C
25		24.3	9.5	53.3	51.3	39.8	36.8	
31.25		23.6	10.7	51.9	49.9	37.9	34.9	
62.5		21.5	15.4	47.4	45.4	31.9	28.9	
100		20.1	19.8	44.3	42.3	37.8	24.8	
200		18.0	29	39.8	37.8	21.8	18.8	
250		17.3	32.8	38.3	36.3	19.8	16.8	



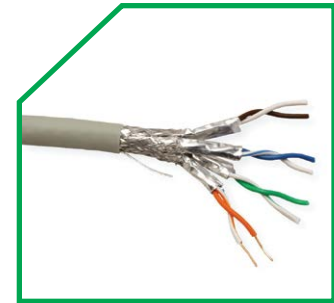
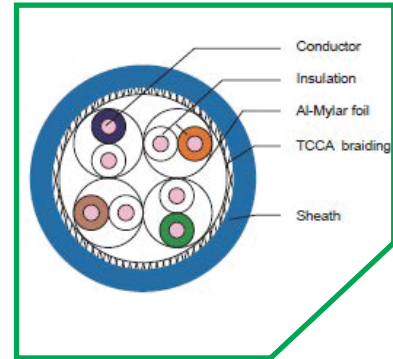
Part Number: PVC: PL-CA7STP LSZH: PL-CA7STL

FEATURES:

comply with all category 7 requirements as:

- ISO/IEC 11801 ED.2.2:2011
- ANSI/TIA 568-C.2:2011
- CENELEC EN 50173-1:2011
- CENELEC EN 50288-6-1:2013
- IEC61156-5:2012(Edition 2.0)
- Characterized and tested to 350MHz

DRAWING:



APPLICATIONS:

- 10GBASE-T Ethernet
- 1000BASE-TX
- 1000BASE-T
- 100BASE-TX Fast Ethernet
- 10BASE-T Ethernet
- Voice

CONFIGURATION:

Category	SFTP CAT.7			Jacket Physical Properties	Before Aging Tensile Strength(Mpa)≥13.5
Test Standard	ISO/IEC 11801,TIA/EIA 568B.2 IEC61156-5				Elongation(%)≥150
Conductor	Material	Solid Bare Copper			Aging Period(°C*hrs) 100°C*24h*7d
	Nom.O.D.	0.585±0.003mm			After Aging Tensile Strength(MPa) ≥12.5
Insulation	Material	Skin-foam-Skin PE		Elongatio n(%) ≥125	
	Nom.O.D.	1.40±0.05mm		Cold bend(-20±2°C*4h) No visible cracks	
Shield	Al Foil 100%	Braid 30%	Tinned copper braid or Al braid	Electrical Characteristics (20°C)	Impedance(Ω) 100±15
Jacket	Thickness	0.65±0.05mm			Delay Shew(ns/100m) ≤45
	External O.D.	7.4±0.2mm			NVP 69%
	Material	LSZH			Capacitance(nf/100m) ≤5.6
	Color	According to Requires			DC Resistance(Ω/100m) ≤9.5
Rip-cord	Yes	Drain Wire	Tinned copper	DC Resistance Unbalance(%) ≤2.0	
Packing	305meters or 500m/Wooden Reel/Carton				

Lan Cable

Cable Cat6 FTP Part Number

Gray PVC

PL-CA6FTP	Category 6 F/UTP Installation cable, 305m, Gray , PVC
-----------	--

Gray LSZH

PL-CA6FTL	Category 6 F/UTP Installation cable, 305m, Gray , LSZH
-----------	---

Green PVC

PL-CA6FTPG	Category 6 F/UTP Installation cable, 305m, Green , PVC
------------	---

Green LSZH

PL-CA6FTLG	Category 6 F/UTP Installation cable, 305m, Green , LSZH
------------	--

Yellow PVC

PL-CA6FTPY	Category 6 F/UTP Installation cable, 305m, Yellow , PVC
------------	--

Yellow LSZH

PL-CA6FTLY	Category 6 F/UTP Installation cable, 305m, Yellow , LSZH
------------	---

Blue PVC

PL-CA6FTPB	Category 6 F/UTP Installation cable, 305m, Blue , PVC
------------	--

Blue LSZH

PL-CA6FTLB	Category 6 F/UTP Installation cable, 305m, Blue , LSZH
------------	---

Red PVC

PL-CA6FTPR	Category 6 F/UTP Installation cable, 305m, Red , PVC
------------	---

Red LSZH

PL-CA6FTLR	Category 6 F/UTP Installation cable, 305m, Red , LSZH
------------	--

Purple PVC

PL-CA6FTPP	Category 6 F/UTP Installation cable, 305m, Purple , PVC
------------	--

Purple LSZH

PL-CA6FTLP	Category 6 F/UTP Installation cable, 305m, Purple , LSZH
------------	---

Cable Cat6 SFTP Part Number

Gray PVC

PL-CA6STP	Category 6 S/FTP Installation cable, 305m, Gray , PVC
-----------	--

Gray LSZH

PL-CA6STL	Category 6 S/FTP Installation cable, 305m, Gray , LSZH
-----------	---

Green PVC

PL-CA6STPG	Category 6 S/FTP Installation cable, 305m, Green , PVC
------------	---

Green LSZH

PL-CA6STLG	Category 6 S/FTP Installation cable, 305m, Green , LSZH
------------	--

Yellow PVC

PL-CA6STPY	Category 6 S/FTP Installation cable, 305m, Yellow , PVC
------------	--

Yellow LSZH

PL-CA6STLY	Category 6 S/FTP Installation cable, 305m, Yellow , LSZH
------------	---

Blue PVC

PL-CA6STPB	Category 6 S/FTP Installation cable, 305m, Blue , PVC
------------	--

Blue LSZH

PL-CA6STLB	Category 6 S/FTP Installation cable, 305m, Blue , LSZH
------------	---

Red PVC

PL-CA6STPR	Category 6 S/FTP Installation cable, 305m, Red , PVC
------------	---

Red LSZH

PL-CA6STLR	Category 6 S/FTP Installation cable, 305m, Red , LSZH
------------	--

Purple PVC

PL-CA6STPP	Category 6 S/FTP Installation cable, 305m, Purple , PVC
------------	--

Purple LSZH

PL-CA6STLP	Category 6 S/FTP Installation cable, 305m, Purple , LSZH
------------	---

Cable Cat6 UTP Part Number

Gray PVC

PL-CA6UTP	Category 6 U/UTP Installation cable, 305m, Gray , PVC
-----------	--

Gray LSZH

PL-CA6UTL	Category 6 U/UTP Installation cable, 305m, Gray , LSZH
-----------	---

Green PVC

PL-CA6UTPG	Category 6 U/UTP Installation cable, 305m, Green , PVC
------------	---

Green LSZH

PL-CA6UTLG	Category 6 U/UTP Installation cable, 305m, Green , LSZH
------------	--

Yellow PVC

PL-CA6UTPY	Category 6 U/UTP Installation cable, 305m, Yellow , PVC
------------	--

Yellow LSZH

PL-CA6UTLY	Category 6 U/UTP Installation cable, 305m, Yellow , LSZH
------------	---

Blue PVC

PL-CA6UTPB	Category 6 U/UTP Installation cable, 305m, Blue , PVC
------------	--

Blue LSZH

PL-CA6UTLB	Category 6 U/UTP Installation cable, 305m, Blue , LSZH
------------	---

Red PVC

PL-CA6UTPR	Category 6 U/UTP Installation cable, 305m, Red , PVC
------------	---

Red LSZH

PL-CA6UTLR	Category 6 U/UTP Installation cable, 305m, Red , LSZH
------------	--

Purple PVC

PL-CA6UTPP	Category 6 U/UTP Installation cable, 305m, Purple , PVC
------------	--

Purple LSZH

PL-CA6UTLP	Category 6 U/UTP Installation cable, 305m, Purple , LSZH
------------	---

Cable Cat6A FTP Part Number

Gray PVC

PL-CA6AFTP	Category 6A F/UTP Installation cable, 305m, Gray , PVC
------------	---

Gray LSZH

PL-CA6AFTL	Category 6A F/UTP Installation cable, 305m, Gray , LSZH
------------	--

Green PVC

PL-CA6AFTPG	Category 6A F/UTP Installation cable, 305m, Green , PVC
-------------	--

Green LSZH

PL-CA6AFTLG	Category 6A F/UTP Installation cable, 305m, Green , LSZH
-------------	---

Yellow PVC

PL-CA6AFTPY	Category 6A F/UTP Installation cable, 305m, Yellow , PVC
-------------	---

Yellow LSZH

PL-CA6AFTLY	Category 6A F/UTP Installation cable, 305m, Yellow , LSZH
-------------	--

Blue PVC

PL-CA6AFTPB	Category 6A F/UTP Installation cable, 305m, Blue , PVC
-------------	---

Blue LSZH

PL-CA6AFTLB	Category 6A F/UTP Installation cable, 305m, Blue , LSZH
-------------	--

Red PVC

PL-CA6AFTPR	Category 6A F/UTP Installation cable, 305m, Red , PVC
-------------	--

Red LSZH

PL-CA6AFTLR	Category 6A F/UTP Installation cable, 305m, Red , LSZH
-------------	---

Purple PVC

PL-CA6AFTPP	Category 6A F/UTP Installation cable, 305m, Purple , PVC
-------------	---

Purple LSZH

PL-CA6AFTLP	Category 6A F/UTP Installation cable, 305m, Purple , LSZH
-------------	--

Cable Cat6A SFTP Part Number

Gray PVC

PL-CA6ASTP	Category 6A S/FTP Installation cable, 305m, Gray , PVC
------------	---

Gray LSZH

PL-CA6ASTL	Category 6A S/FTP Installation cable, 305m, Gray , LSZH
------------	--

Green PVC

PL-CA6ASTPG	Category 6A S/FTP Installation cable, 305m, Green , PVC
-------------	--

Green LSZH

PL-CA6ASTLG	Category 6A S/FTP Installation cable, 305m, Green , LSZH
-------------	---

Yellow PVC

PL-CA6ASTPY	Category 6A S/FTP Installation cable, 305m, Yellow , PVC
-------------	---

Yellow LSZH

PL-CA6ASTLY	Category 6A S/FTP Installation cable, 305m, Yellow , LSZH
-------------	--

Blue PVC

PL-CA6ASTPB	Category 6A S/FTP Installation cable, 305m, Blue , PVC
-------------	---

Blue LSZH

PL-CA6ASTLB	Category 6A S/FTP Installation cable, 305m, Blue , LSZH
-------------	--

Red PVC

PL-CA6ASTPR	Category 6A S/FTP Installation cable, 305m, Red , PVC
-------------	--

Red LSZH

PL-CA6ASTLR	Category 6A S/FTP Installation cable, 305m, Red , LSZH
-------------	---

Purple PVC

PL-CA6ASTPP	Category 6A S/FTP Installation cable, 305m, Purple , PVC
-------------	---

Purple LSZH

PL-CA6ASTLP	Category 6A S/FTP Installation cable, 305m, Purple , LSZH
-------------	--

Cable Cat6A UTP Part Number

Gray PVC

PL-CA6AUTP	Category 6A U/UTP Installation cable, 305m, Gray , PVC
------------	---

Gray LSZH

PL-CA6AUTL	Category 6A U/UTP Installation cable, 305m, Gray , LSZH
------------	--

Green PVC

PL-CA6AUTPG	Category 6A U/UTP Installation cable, 305m, Green , PVC
-------------	--

Green LSZH

PL-CA6AUTLG	Category 6A U/UTP Installation cable, 305m, Green , LSZH
-------------	---

Yellow PVC

PL-CA6AUTPY	Category 6A U/UTP Installation cable, 305m, Yellow , PVC
-------------	---

Yellow LSZH

PL-CA6AUTLY	Category 6A U/UTP Installation cable, 305m, Yellow , LSZH
-------------	--

Blue PVC

PL-CA6AUTPB	Category 6A U/UTP Installation cable, 305m, Blue , PVC
-------------	---

Blue LSZH

PL-CA6AUTLB	Category 6A U/UTP Installation cable, 305m, Blue , LSZH
-------------	--

Red PVC

PL-CA6AUTPR	Category 6A U/UTP Installation cable, 305m, Red , PVC
-------------	--

Red LSZH

PL-CA6AUTLR	Category 6A U/UTP Installation cable, 305m, Red , LSZH
-------------	---

Purple PVC

PL-CA6AUTPP	Category 6A U/UTP Installation cable, 305m, Purple , PVC
-------------	---

Purple LSZH

PL-CA6AUTLP	Category 6A U/UTP Installation cable, 305m, Purple , LSZH
-------------	--

Cable Cat7 SFTP Part Number

Gray PVC

PL-CA7STP	Category 7 S/FTP Installation cable, 305m, Gray , PVC
-----------	--

Gray LSZH

PL-CA7STL	Category 7 S/FTP Installation cable, 305m, Gray , LSZH
-----------	---

Green PVC

PL-CA7STPG	Category 7 S/FTP Installation cable, 305m, Green , PVC
------------	---

Green LSZH

PL-CA7STLG	Category 7 S/FTP Installation cable, 305m, Green , LSZH
------------	--

Yellow PVC

PL-CA7STPY	Category 7 S/FTP Installation cable, 305m, Yellow , PVC
------------	--

Yellow LSZH

PL-CA7STLY	Category 7 S/FTP Installation cable, 305m, Yellow , LSZH
------------	---

Blue PVC

PL-CA7STPB	Category 7 S/FTP Installation cable, 305m, Blue , PVC
------------	--

Blue LSZH

PL-CA7STLB	Category 7 S/FTP Installation cable, 305m, Blue , LSZH
------------	---

Red PVC

PL-CA7STPR	Category 7 S/FTP Installation cable, 305m, Red , PVC
------------	---

Red LSZH

PL-CA7STLR	Category 7 S/FTP Installation cable, 305m, Red , LSZH
------------	--

Purple PVC

PL-CA7STPP	Category 7 S/FTP Installation cable, 305m, Purple , PVC
------------	--

Purple LSZH

PL-CA7STLP	Category 7 S/FTP Installation cable, 305m, Purple , LSZH
------------	---



 **Planet Structure Cabling Systems Inc.**

 **Montreal, CANADA**

 **info@planet-ca.com**

 **+1 438 990 0820**



www.planet-ca.com