

Planet

Structure Cabling Systems



WELL EXPERIENCED

More than 13 years experience
in networking industry



PROFESSIONAL TEAM

We have professional sales team
to offer fast response and engineers
to support different solutions



ABUNDANT PRODUCTS

Integrated and completed
product lines
for networking and cabling items



STANDARDS COMPLIANCE

ANSI/EIA RS-310-D, IEC2-297,
DIN43494/43491,
GB/T92-3047.2 Metric & ETSI
standard



Part Number: PL-KE3UJ

FEATURES:

Cat.3 UTP Keystone Jack

- Performance conforms to ANSI/TIA 568.2-D, ISO/IEC 11801-1, EN 50173-1 Class Ea specification
- Enhanced circuit board design and improved RJ45 contacts provide superior performance
- Compact design ideal for high density applications: up to 24 keystone jacks can fit into 1U 24 port unloaded patch panel
- Dual IDC connector can accept 22-26 AWG solid cables
- Terminate with 110 or krone tools
- ETL Verified
- RoHS compliant

DRAWING:



CHARACTERISTICS:

Dielectric Strength	1000V RMS for 1min
Current Rating	1.5Amp Max.
Insulation Resistance	10MΩ Min.
Contact Resistance	2mΩ per contact
Temperature Range	-10° to 60
Humidity	10%~90%; non condensing
Material Flame Rating	PC, UL94 V-0
Admissible Conductor	22AWG ~ 26AWG insulation wire
4pin contact PCB Jack	Phosphor bronze, 50μ inch gold plated over nickel plated in contact area
	Operating lifeMinimum 750 insertions
IDC Contacts	100μ inch nickel plated over phosphor bronze
	Operating lifeMinimum 250 Re-terminations

APPLICATIONS:

- 1000BASE-TX
- 1000BASE-T
- 100BASE-TX Fast Ethernet
- 10BASE-T Ethernet
- Voice

Part Number: PL-KE6UPW



FEATURES:

Cat.6 UTP Keystone Jack

- Conform to TIA/EIA-568.2-D, ISO/IEC 11801-1 and EN50173-1 category 6 specification
- Supports T568 A&B wiring
- Termination lid ensures excellent strain relief, cable bend radius control and secure fixing
- Accepts 22-24 AWG solid cables
- IDC contacts: high performance copper alloy with 50µ inch gold plating over nickel in contact area
- Housing material: high impact UL 94V-0 ABS
- Insertion life: 750 plug insertions minimum
- RoHS compliant

APPLICATIONS:

- 1000BASE-TX
- 1000BASE-T
- 100BASE-TX Fast Ethernet
- 10BASE-T Ethernet
- Voice

CHARACTERISTICS:

RJ45 Housing	PC
IDC House	PC
RJ45 Contact material & finished	Phosphor Bronze with 50-60" Nickel plated
	Contact area: Min. 3mm 3" Gold plated
IDC Terminal material & finished	Phosphor Bronze with 50" Tin-Lead plated. over 50-60 " Nickel plated
	110 tool compatible
	Use for 23-24AWG stranded and solid wire
Property	The IDC color combine
Insertion Force	900 grams for 8 contacts
Retention Strength	7.7 kgs between jack and plug
Operation Temperature	-30° C to 70° C
Jack Durability	Jack: 750 cycles Plug-Jack mating and unmating test. Insertion cycles at 20 cycles/minute max. Contact resistance test per 100 cycles
IDC Durability	Max. 200 pinching times
Standards compliant	Performance is in compliance with the TIA/EIA-568-C2

Part Number: PL-KE6UPD



FEATURES:

Cat.6 UTP Keystone Jack

- Conform to TIA/EIA-568.2-D, ISO/IEC 11801-1 and EN50173-1 category 6 specification
- Supports T568 A&B wiring
- Termination lid ensures excellent strain relief, cable bend radius control and secure fixing
- Accepts 22-24 AWG solid cables
- IDC contacts: high performance copper alloy with 50µ inch gold plating over nickel in contact area
- Housing material: high impact UL 94V-0 ABS
- Insertion life: 750 plug insertions minimum
- RoHS compliant

APPLICATIONS:

- 1000BASE-TX
- 1000BASE-T
- 100BASE-TX Fast Ethernet
- 10BASE-T Ethernet
- Voice

CHARACTERISTICS:

RJ45 Housing	PC
IDC House	PC
RJ45 Contact material & finished	Phosphor Bronze with 50-60" Nickel plated
	Contact area: Min. 3mm 3" Gold plated
IDC Terminal material & finished	Phosphor Bronze with 50" Tin-Lead plated. over 50-60 " Nickel plated
	110 tool compatible
	Use for 23-24AWG stranded and solid wire
Property	The IDC color combine
Insertion Force	900 grams for 8 contacts
Retention Strength	7.7 kgs between jack and plug
Operation Temperature	-30° C to 70° C
Jack Durability	Jack: 750 cycles Plug-Jack mating and unmating test. Insertion cycles at 20 cycles/minute max. Contact resistance test per 100 cycles
IDC Durability	Max. 200 pinching times
Standards compliant	Performance is in compliance with the TIA/EIA-568-C2

Part Number: PL-KE6UTL



FEATURES:

Cat.6 UTP Unshielded Toolless Keystone Jack

- Conform to TIA/EIA-568.2-D, ISO/IEC 11801-1 and EN50173-1 category 6 specification
- Supports T568 A&B wiring & easy installation
- Termination lid ensures excellent strain relief, cable bend radius control and secure fixing
- Accepts 22-24 AWG solid cables
- IDC contacts: high performance copper alloy with 50µ inch gold plating over nickel in contact area
- Housing material: high impact UL 94V-0 ABS
- Insertion life: 750 plug insertions minimum
- RoHS compliant

CHARACTERISTICS:

RJ45 Housing	PC
IDC House	PC
RJ45 Contact material & finished	Phosphor Bronze with 50-60" Nickel plated
	Contact area: Min. 3mm 3" Gold plated
IDC Terminal material & finished	Phosphor Bronze with 50" Tin-Lead plated. over 50-60 " Nickel plated
	110 tool compatible
	Use for 23-24AWG stranded and solid wire
Property	The IDC color combine
Insertion Force	900 grams for 8 contacts
Retention Strength	7.7 kgs between jack and plug
Operation Temperature	-30° C to 70° C
Jack Durability	Jack: 750 cycles Plug-Jack mating and unmating test. Insertion cycles at 20 cycles/minute max. Contact resistance test per 100 cycles
IDC Durability	Max. 200 pinching times
Standards compliant	Performance is in compliance with the TIA/EIA-568-C2

Part Number: PL-KE6UTL

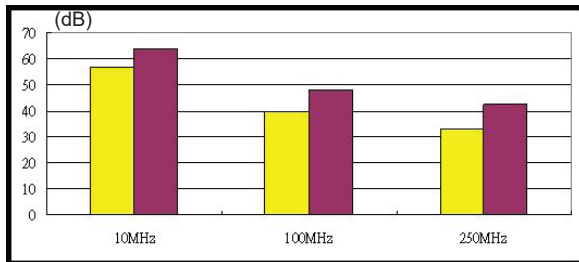
APPLICATIONS:

- 1000BASE-TX
- 1000BASE-T
- 100BASE-TX Fast Ethernet
- 10BASE-T Ethernet
- Voice

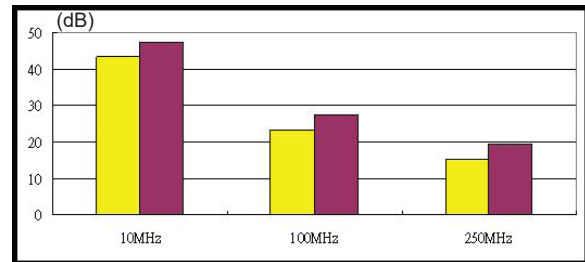
TYPICAL PERFORMANCE:

Cat.6 UTP

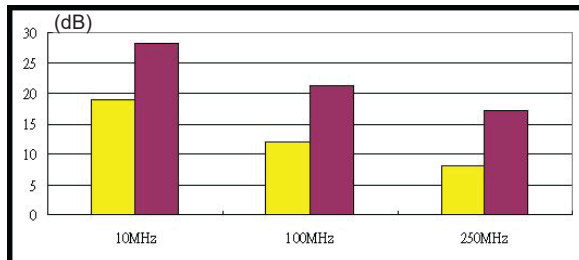
NEXT



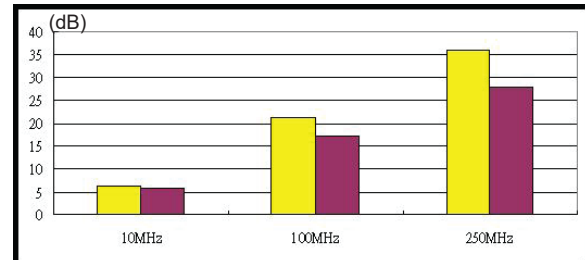
ELFEXT



Return Loss



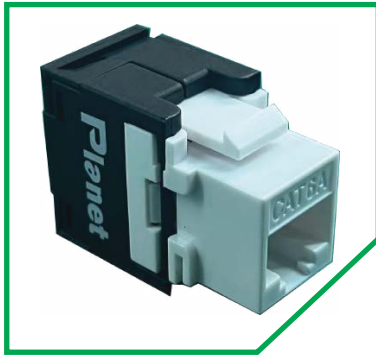
Insertion Loss



Cat.6 Limit
 Typical

Part Number: PL-KE6AUTL

DRAWING:



FEATURES:

Cat.6A UTP Unshielded Toolless Keystone Jack

- Conform to TIA/EIA-568.2-D, ISO/IEC 11801-1 and EN50173-1 category 6A specification
- Supports T568 A&B wiring & easy installation
- Termination lid ensures excellent strain relief, cable bend radius control and secure fixing
- Accepts 22-24 AWG solid cables
- IDC contacts: high performance copper alloy with 50µ inch gold plating over nickel in contact area
- Housing material: high impact UL 94V-0 ABS
- Insertion life: 750 plug insertions minimum
- RoHS compliant

CHARACTERISTICS:

RJ45 Housing	PC
IDC House	PC
RJ45 Contact material & finished	Phosphor Bronze with 50-60" Nickel plated
	Contact area: Min. 3mm 3" Gold plated
IDC Terminal material & finished	Phosphor Bronze with 50" Tin-Lead plated. over 50-60 " Nickel plated
	110 tool compatible
	Use for 23-24AWG stranded and solid wire
Property	The IDC color combine
Insertion Force	900 grams for 8 contacts
Retention Strength	7.7 kgs between jack and plug
Operation Temperature	-30° C to 70° C
Jack Durability	Jack: 750 cycles Plug-Jack mating and unmating test. Insertion cycles at 20 cycles/minute max. Contact resistance test per 100 cycles
IDC Durability	Max. 200 pinching times
Standards compliant	Performance is in compliance with the TIA/EIA-568-C2

Part Number: PL-KE6AUTL

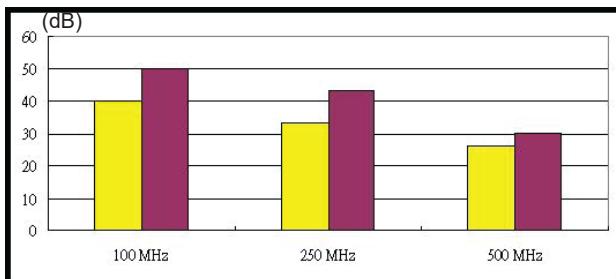
APPLICATIONS:

- 10GBASE-T Ethernet
- 1000BASE-TX
- 1000BASE-T
- 100BASE-TX Fast Ethernet
- 10BASE-T Ethernet
- Voice

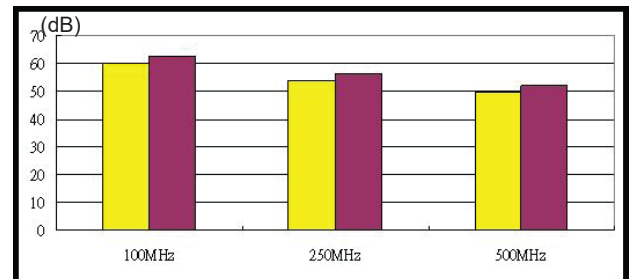
TYPICAL PERFORMANCE:

CAT.6A UTP

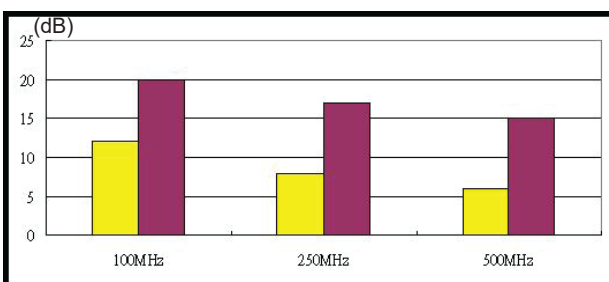
PSNEXT



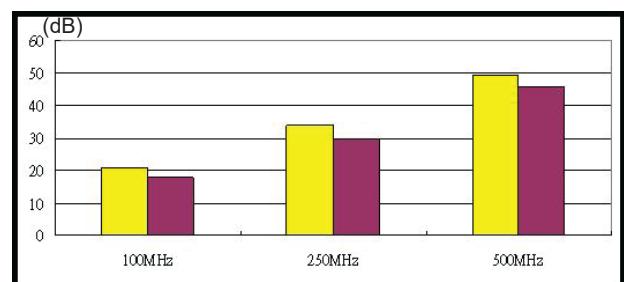
PSANEXT



Return Loss

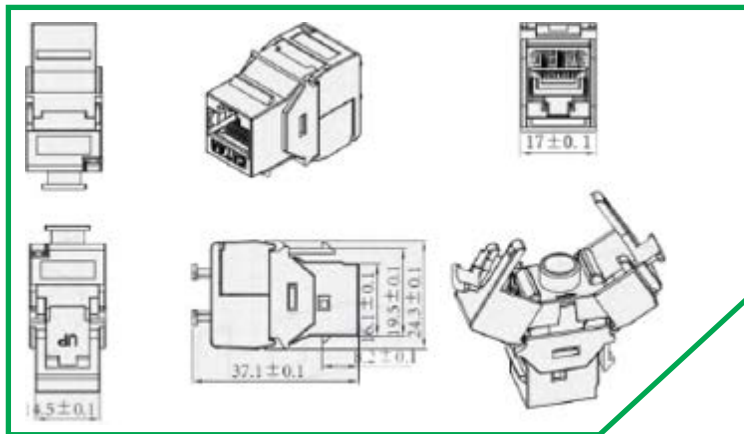
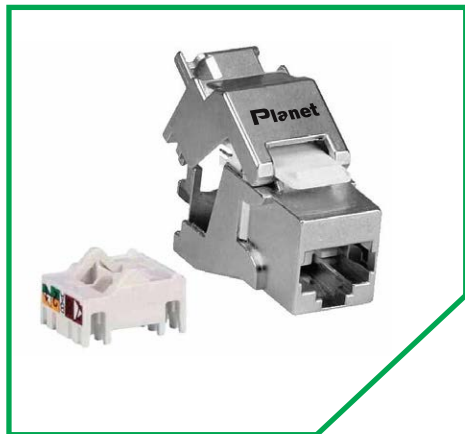


Insertion Loss



Cat.6A Limit
 Typical

Part Number: PL-KE6STL



FEATURES:

Cat.6 STP Toolless Keystone Jack

- Conform to TIA/EIA-568.2-D, ISO/IEC 11801-1 and EN50173-1 category 6 specification
- Supports T568 A&B wiring & easy installation
- Termination lid ensures excellent strain relief, cable bend radius control and secure fixing
- Accepts 22-24 AWG solid cables
- IDC contacts: high performance copper alloy with 50µ inch gold plating over nickel in contact area
- Housing material: high impact UL 94V-0 ABS
- Insertion life: 750 plug insertions minimum
- RoHS compliant

CHARACTERISTICS:

RJ45 Housing	PC
IDC House	PC
RJ45 Contact material & finished	Phosphor Bronze with 50-60" Nickel plated Contact area: Min. 3mm 3" Gold plated
IDC Terminal material & finished	Phosphor Bronze with 50" Tin-Lead plated. over 50-60 " Nickel plated 110 tool compatible Use for 23-24AWG stranded and solid wire
Property	The IDC color combine
Insertion Force	900 grams for 8 contacts
Retention Strength	7.7 kgs between jack and plug
Operation Temperature	-30° C to 70° C
Jack Durability	Jack: 750 cycles Plug-Jack mating and unmating test. Insertion cycles at 20 cycles/minute max. Contact resistance test per 100 cycles
IDC Durability	Max. 200 pinching times
Standards compliant	Performance is in compliance with the TIA/EIA-568-C2

Part Number: PL-KE6STL

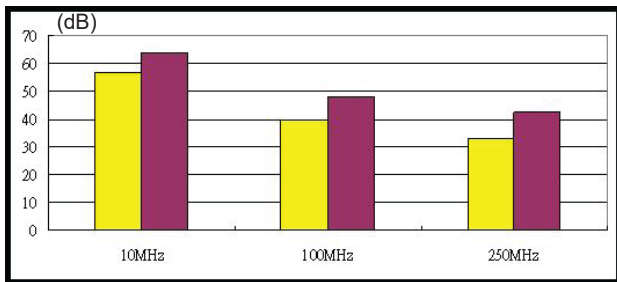
APPLICATIONS:

- 1000BASE-TX
- 1000BASE-T
- 100BASE-TX Fast Ethernet
- 10BASE-T Ethernet
- Voice

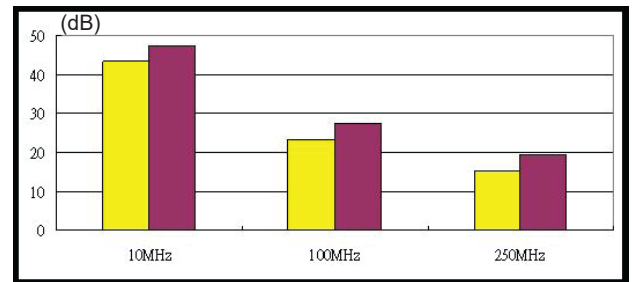
TYPICAL PERFORMANCE:

Cat.6 STP

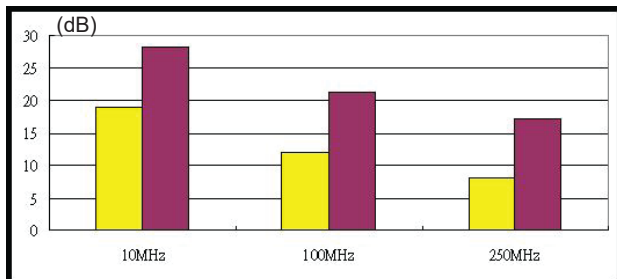
NEXT



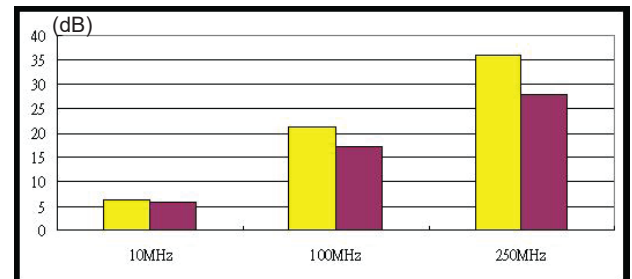
ELFEXT



Return Loss



Insertion Loss



Cat.6 Limit
 Typical

Part Number: PL-KE6ASTL

DRAWING:



FEATURES:

Cat.6A STP Toolless Keystone Jack

- Conform to TIA/EIA-568.2-D, ISO/IEC 11801-1 and EN50173-1 category 6A specification
- Supports T568 A&B wiring & easy installation
- Termination lid ensures excellent strain relief, cable bend radius control and secure fixing
- Accepts 22-24 AWG solid cables
- IDC contacts: high performance copper alloy with 50µ inch gold plating over nickel in contact area
- Housing material: high impact UL 94V-0 ABS
- Insertion life: 750 plug insertions minimum
- RoHS compliant

CHARACTERISTICS:

Housing material	Zinc Alloy
Insert material	Flame Retardant PC
PCB material	FR-4T=1.2mm
Contact material	Phosphor bronze stamp PIN T=0.35mm
IDC contact material	Phosphor bronze T=0.50mm WITH TIN PLATING
RJ45 JACK LIFE	750 TIMES MIN
IDC LIFE	200 TIMES MIN
Storage ENVIRONMENTAL	-40°TO +70°
Operation	-10°TO 60°
Voltage rating	125 VAC RMS
Current rating	1.5 AMP
WIRE	AWG 22~24
TIA Cat 6A Perm	Link Test: Worst pair NEXT margin ≥ 3.0dB
Contact resistance	20 Milliohms MAX
Insulation resistance	100 Megohms MIN @ 500 VDC
Dielectric strength	750 VAC RMS 60Hz, 1MIN

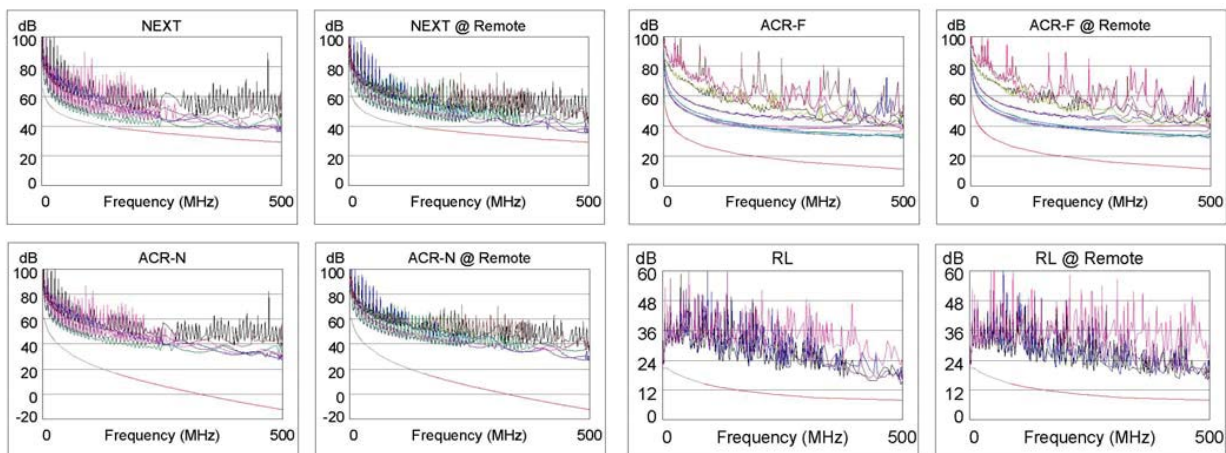
Part Number: PL-KE6ASTL

APPLICATIONS:

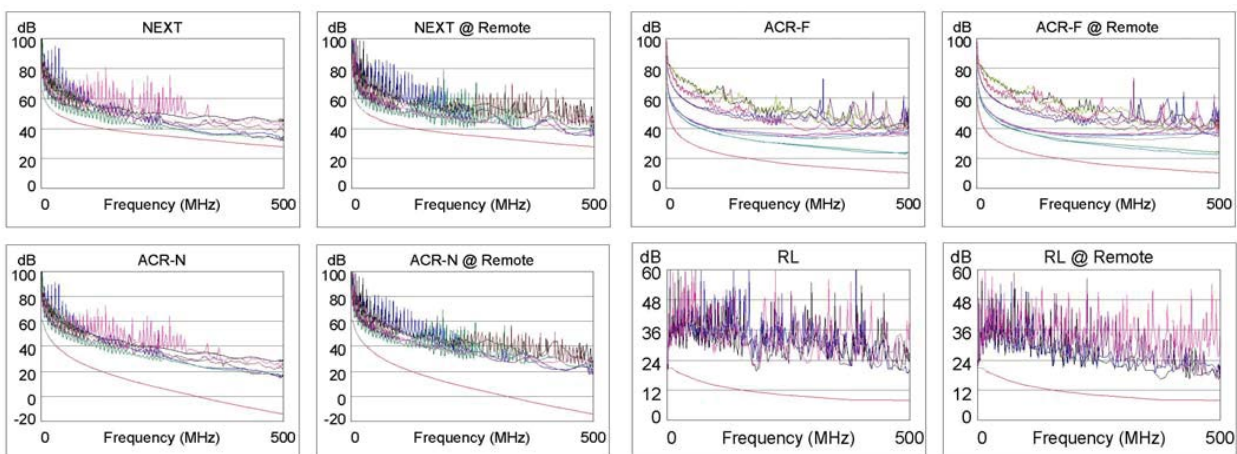
- 10GBASE-T Ethernet
- 1000BASE-TX
- 1000BASE-T
- 100BASE-TX Fast Ethernet
- 10BASE-T Ethernet
- Voice

TYPICAL PERFORMANCE:

CAT.6A STP PL2



CAT.6A STP PL3



Part Number: PL-KE7STL

DRAWING:



FEATURES:

Cat.6A STP Toolless Keystone Jack

- Conform to TIA/EIA-568.2-D, ISO/IEC 11801-1 and EN50173-1 category 7 specification
- Supports T568 A&B wiring & easy installation
- Termination lid ensures excellent strain relief, cable bend radius control and secure fixing
- Accepts 22-24 AWG solid cables
- IDC contacts: high performance copper alloy with 50µ inch gold plating over nickel in contact area
- Housing material: high impact UL 94V-0 ABS
- Insertion life: 750 plug insertions minimum
- RoHS compliant

CHARACTERISTICS:

Housing material	Zinc Alloy
Insert material	Flame Retardant PC
PCB material	FR-4T=1.2mm
Contact material	Phosphor bronze stamp PIN T=0.35mm
IDC contact material	Phosphor bronze T=0.50mm WITH TIN PLATING
RJ45 JACK LIFE	750 TIMES MIN
IDC LIFE	200 TIMES MIN
Storage ENVIRONMENTAL	-40°TO +70°
Operation	-10°TO 60°
Voltage rating	125 VAC RMS
Current rating	1.5 AMP
WIRE	AWG 22~24
TIA Cat 6APerm	Link Test: Worst pair NEXT margin3.0dB
Contact resistance	20 Milliohms MAX
Insulation resistance	100 Megohms MIN @ 500 VDC
Dielectric strength	750 VAC RMS 60Hz, 1MIN

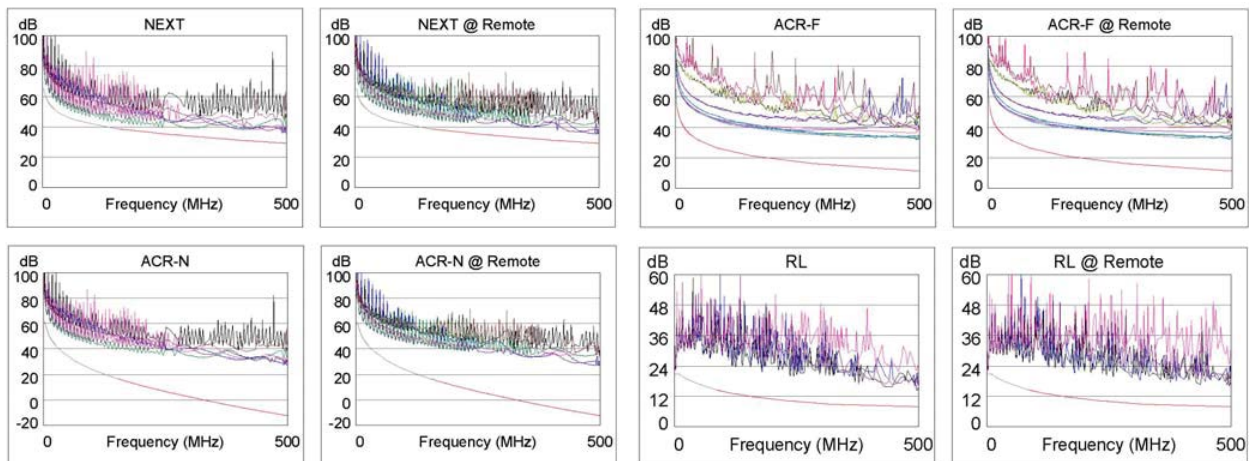
Part Number: PL-KE7STL

APPLICATIONS:

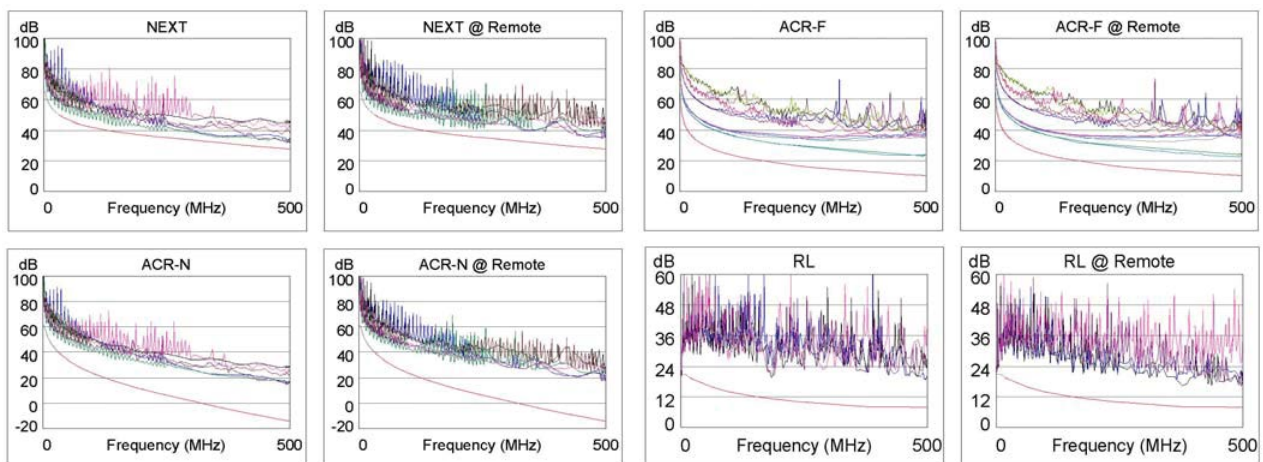
- 10GBASE-T Ethernet
- 1000BASE-TX
- 1000BASE-T
- 100BASE-TX Fast Ethernet
- 10BASE-T Ethernet
- Voice

TYPICAL PERFORMANCE:

CAT.7 STP PL2



CAT.7 STP PL3





 **Planet Structure Cabling Systems Inc.**

 **Montreal, CANADA**

 **info@planet-ca.com**

 **+1 438 990 0820**



www.planet-ca.com