

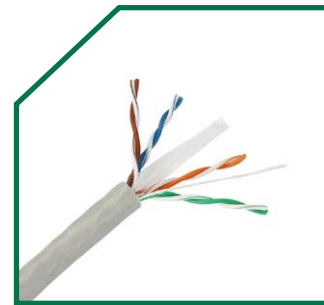
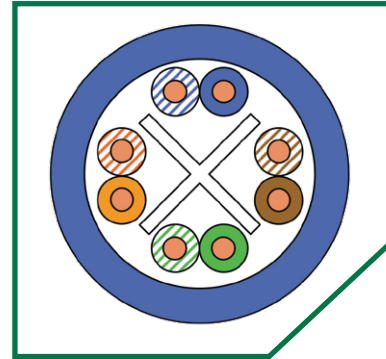
Part Number: PVC: PL-CA6UTP LSZH: PL-CA6UTL

FEATURES:

comply with all category 6 requirements as:

- ISO/IEC 11801 ED.2.2:2011
- ANSI/TIA 568-C.2:2011
- CENELEC EN 50173-1:2011
- CENELEC EN 50288-6-1:2013
- IEC61156-5:2012(Edition 2.0)
- Characterized and tested to 350MHz

DRAWING:



APPLICATIONS:

- 1000BASE-TX
- 1000BASE-T
- 100BASE-TX Fast Ethernet
- 10BASE-T Ethernet
- Voice

CONFIGURATION:

Conductor	Material	Bare Copper	
	Construction	23 AWG 0.565 mm ± 0.02	
Insulation	Material	HDPE	
	Diameter	1.00 ± 0.1 mm	
Cross Member	Material	PE	
Sheath	Material	PVC	LSZH
	Thickness	0.5mm nominal	
	Diameter	6.2 ± 0.3 mm	

Technical Performance (100M)

Frequency MHz	Attenuation Max dB/100m	NEXT Min. dB/100m	PSNEXT Min. dB/100m	ELFEXT Min. db/100m	RL Min. dB	PHASE VELOCITY MIN(M/S)	PHASE DELAY MAX(ns/100m)
1	1.9	74	72	68	20	0.585c	570
4	3.7	65	63	56	23	---	552
10	5.9	59	57	48	25	0.611c	545
16	7.5	56	54	44	25	---	543
20	8.4	55	53	42	25	---	542
31.25	10.6	52	50	38	23.6	---	540
62.5	15.4	47	45	32	21.5	---	539
100	19.8	44	42	28	20.1	0.620c	538
200	29	40	38	22	18	---	537
250	32.8	38	36	20	17.3	0.622c	536