

**Part Number: PCV:** PL-CA6AUTP / **LSZH:** PL-CA6AUTL

**FEATURES:**

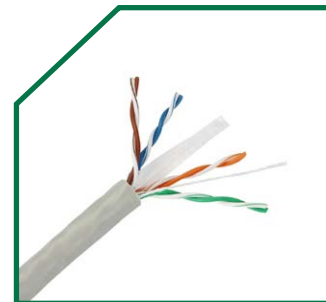
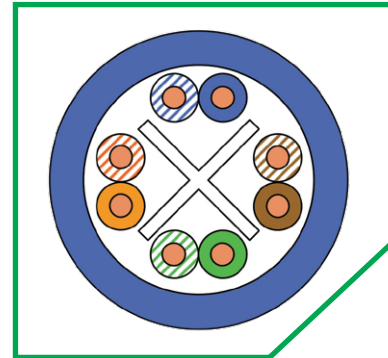
comply with all category 6A requirements as:

- ISO/IEC 11801 ED.2.2:2011
- ANSI/TIA 568-C.2:2011
- CENELEC EN 50173-1:2011
- CENELEC EN 50288-6-1:2013
- IEC61156-5:2012(Edition 2.0)
- Characterized and tested to 350MHz

**APPLICATIONS:**

- 10GBASE-T Ethernet
- 1000BASE-TX
- 1000BASE-T
- 100BASE-TX Fast Ethernet
- 10BASE-T Ethernet
- Voice

**DRAWING:**



**CONFIGURATION:**

Conductor	Material	Bare Copper	
	Construction	23 AWG 0.565 mm ± 0.02	
Insulation	Material	HDPE	
	Diameter	1.00 ± 0.1 mm	
Cross Member	Material	PE	
Sheath	Material	PVC	LSZH
	Thickness	0.5mm nominal	
	Diameter	7.5 ± 0.3 mm	

**Technical Performance (100M)**

Frequency	ATT(20°C)	RL	NEXT	PSNEXT	ACR-F	PS ACR-F	PS ANEXT	PS AACR-F
(MHz)	≤dB	≥dB	≥dB	≥dB	≥dB	≥dB	≥dB	≥dB
1	2.1	20	74.3	72.3	67.8	64.8	67	67
4	3.8	23	65.3	63.3	55.8	52.8	67	66.2
10	5.9	25	59.3	57.3	47.8	44.8	67	58.2
16	7.5	25	56.2	54.2	43.7	40.7	67	54.1
20	8.4	25	54.8	52.8	41.8	38.8	67	52.2
31.25	10.5	23.6	51.9	49.9	37.9	34.9	67	48.3
62.5	15	21.5	47.7	45.4	31.9	28.9	65.6	42.3
100	19.1	20.1	44.3	42.3	27.8	24.8	62.5	38.2
200	27.6	18	39.8	37.8	21.8	18.8	58	32.2
250	31.1	17.3	38.3	36.3	19.8	16.8	56.5	30.2
300	34.3	16.8	37.1	35.1	18.3	15.3	55.3	28.7
500	45.3	15.2	33.8	31.8	13.8	10.8	52	24.2
550	51.2	14.5	35.1	29.5	10.8	9.6	48	20.2